



TRANS-SIBERIAN

THE BROCHURE

The Russia Experience

2005/2006



THE CONTENTS

your complete guide



WHEN SHOULD I GO	4
WHY RUSSIA EXP	5
DESTINATION INFO	6
DESTINATION INFO	7
MONGOLIA	8
RUSSIAN CITIES	9
MOSCOW HOTELS	10
ST PETERSBURG HOTELS	11
SPICING IT UP	12
MOSCOW & ST PETES EXCURSIONS	13
STARTING YOUR TRANS SIB IN ST PETES	15
ULTIMATE	16/17
THE MAMMOTH	18/19
THE EPIC	20/21
THE BIG TRANS-SIB	22/23
THE SIBERIAN EXPERIENCE	24/25
THE SUPER TRANS-SIB	26/27
OUTER & INNER MONGOLIA	28/29
THREE CAPITALS	30/31
THE TRANS-SIB CLASSIC	32
ORIGINAL TRANS-SIB	33
EAST WEST BIG TRANS SIB	34/35
SNOW TRAIN	36/37
CHINA TRIPS	38/39
CHINA TRIPS	40/41
CHINA TRIPS	42/43
COUNTDOWN TO YOUR TRIP	44/45
BOOKING CONDITIONS	46
BOOKING FORM	47

SPECIAL PULLOUT CAUCASUS & CENTRAL ASIA

Unique itineraries in Georgia & Uzbekistan





WHY RUSSIA EXPERIENCE?

travelling with russia experience – a ten-year habit



RUSSIA EXPERIENCE are Britain's leading specialists in Russian travel. All of our staff have been to Russia, and we are a dual-office London/Moscow company, with full-time permanent staff in Russia and Britain. Others have tried to copy us - none have succeeded. When tv companies (BBC, ITV) film our destinations, we are the featured travel company. Check us out in the guidebooks, and compare our listings with those of others- if they get a listing?

TRAVELLING WITH RUSSIA EXPERIENCE – A TEN-YEAR HABIT

Russia Experience clients have been travelling to our unique destinations for ten years – our first clients travelled in November 1994. But our staff have an even longer pedigree – the Managing Director's been visiting Russia since 1979, and worked there from 1984, long before we could set-up as a non-State company in the USSR. By 2005 we now have full-size permanent offices in both London and Moscow and a partner office in St Petersburg. Russia Experience gets regular coverage in newspapers and magazines in the UK, Australia, Canada and beyond. We've been the subject of TV travel documentaries – including "Wish You Were Here" (for two large episodes) and by coincidence in our tenth year we've just been filmed again... this time by BBC Holiday and presented by Simon Calder, due to be screened early in 2005. Our staff are often asked to contribute to major guidebooks. This year we're delighted to be introducing two destinations – special trips to Uzbekistan at previously-unaccessible prices... and Georgia – our own MD's favourite vacation spot, a country that's barely known to travellers. Go now – before the crowds realise how good it is!

But always people wonder, errrr.... Why? Why do you do these strange things, when it would be so

much easier for you to offer trips to the Algarve or Ecuador? And the answer is – because we've barely even scratched the surface of the huge areas and unique cultures to be found in our destination countries. China's cultural heritage extends back over multiple millennia... Mongolia's nomadic cultures... the Buddhist legacy in Siberia comes as a surprise to almost everyone... the thriving cultural life of Moscow, the bohemian clubs and cobbled alleys of old St Petersburg... all these things are "why"... we hope that you'll have the same excitement of discovery that still keeps us coming back ourselves ten years later?!

RESIST COLLECTIVISATION, COMRADES! – A WORD ABOUT "DEPARTURE DATES"

All of our trips are for individuals. However, considering that some of our destinations have very sparse international travel connections (particular Ulaanbaatar-Beijing, which amazingly only operates once-weekly!?) it's quite likely that you will encounter our other clients along the way. This especially happens in Mongolia – simply because the web of different Siberian rail services all comes together there, with trips structured around the Thursday train to Beijing. We're sensitive to this situation, but even the President of Mongolia is unable to change it. Where access to outlying must-sees is patchy, we'll have set up whatever transport or meals are needed – for example, it's fun to eat-out in big cities and see what's on offer, but in the Mongolian Gobi or remote Siberian villages we provide evening meals... or it's an 80km walk to anywhere you'd get even basic rations otherwise! And if the Hand Of Fate suddenly separates you from your luggage, or you fall ill or lose your passport – our local on-site to help pick up the pieces.

RESPONSIBLE AND RESPONSIVE

Many of our destinations are languishing in post-Communist economies that badly need the boost tourism can bring. We make it a policy always to work with local projects and partners, and not multinational chain-hotels owned overseas, and to support local businesses offering trips, or food. These provide long-term employment for local people, and channel the money you spend into the local economy. Our aim is always to tread lightly, and leave wonderful places the way we'd wish to find them. We regularly visit all of the locations on our trips to check the latest situation in an ever-changing world – it's a major priority for us.

The Russia Experience Ltd is a British registered company and a fully bonded Tour Operator, with a Bond from Trafalgar Insurance. This bonding meets and exceeds our responsibilities under the EEC 90/314/EC Directive On Package Tourism, which governs our operations. Your travel funds are secure when you book with us.

Thanks for travelling with us, as we enter our second decade of doing this stuff!

Neil McGowan

THE RUSSIA EXPERIENCE ARE: Jo Coombes, Odette Fussey, Jade Cooper, Aimie Conning, Lera Kuteeva, Kate Tairova, Vlad, Tamara, Pam, "Father" Ted & Jenny. Special thanks to Wild Dog Design; Simon Hobday and his team; Finerty Brice; David Leck PR Consultancy. Brochure compiled and edited by Jo Coombes, Odette Fussey, Lera Kuteeva and Neil McGowan. Illustrations by Jane Webster. Photography by Geoffrey Roy, Anna Gezkina, Simon Calder, Carl Jackson, Fred Chan, Dominic Hamilton & Neil McGowan.

WHEN SHOULD I GO?

a year-round adventure



THE TRANS-SIB ROUTE INCLUDES THE DEPTHS OF SIBERIA & THE GOBI DESERT! HOW TO PICK THE RIGHT SEASON? HERE ARE OUR TIPS

The extremes of temperature in our destinations would go off the scales used by conventional travel companies! The Siberian winter can hit -40°C with ease – but summer in the Mongolian Gobi hits $+40^{\circ}\text{C}$ – and no-one's surprised. But what does come as a surprise to most people is that Russia (including Siberia) has blazing-hot summers – and the Gobi has thick snow in winter! But within this there are a few nuances, plus there are seasonal activities, festivals and so on to take into account. Here's our Expert Season Guide – compiled from doing these trips ourselves yearly for ten years! (note: the local climate means seasons may fall in different months to those you expect from home).

SPRING (May-June).

This is a great time to travel – really the best combination of weather throughout the trip. You get the spring greenery and flowers, before everything's been singed by the summer heat. You'll find the locals in an upbeat mood too – the long winter has finally lifted. The last week of June is "super-peak" in St Petersburg, because of the White Nights – the longest days of the year, when it's dark for less than an hour – and more especially because of the

White Nights Theatre & Classical Music Festival. The city's full to bursting, so either book early, or schedule around it.

SUMMER (July to mid-September).

This is the traditional Summer Holiday season, and the time when most visitors come. Mongolia's summer Naadam Festival in August causes log-jamming on the very limited international travel to the world's most land-locked country. The warm weather in Siberia enables a host of outdoor activities – trekking, rafting, riding, diving – featured in our trips! Don't come in summer if you're seeking the Russian ballet or opera – it mostly closes-down to a skeleton operation at best (winter is Theatre Season in Russia).

AUTUMN (mid-Sept, October and November).

The weather can be hard to predict, as Russian autumn weather barely exists – it's just a quick-change into Winter, and by November you can expect some sleety snow. There's a surge in Trans-Siberian passengers trying to catch the last of the good weather at the end of September and early October. Mongolians will take the chance for last outdoor sports and fun together before deep winter snows leave nomadic communities isolated for the long months of winter in a largely roadless country. Theatres will

be wheeling-out their latest shows for the new season from October onwards, if you want to see the ballet or opera.

WINTER (December-April).

Russia's five-month winter is the secret jewel in the crown. It was always a time for fun and frolics – no more work could be done in the fields, whilst the nobility would move back to the city from summer on their Estates – and expect to be entertained! Russia's most traditional appearance is when dusted with snow – you can enjoy winter-only activities like husky-

dog sleighing, or travel around Old St Petersburg in a troika? New Year sees glittering spectacles in the theatres, and special shows at the Circus – it's the biggest holiday of the year. China's New Year is a little later, so you get a second chance – maybe visit the famous Ice-Lantern Festival in Harbin (see the Snow-Train itinerary), and wish your friends *Kung Hei Fat Choy!* – A Happy New Year! On 25th December everything is open in Russia as usual – because the Orthodox Church dates Christmas as January 7th.



TEMPERATURE CHART FOR 4 MAIN LOCATIONS

Degrees Celsius

MOSCOW

Jan	Feb	Mar	Apr	May	Jun	Jul	Aug	Sep	Oct	Nov	Dec
-12°	-12°	0°	6°	18°	25°	30°	30°	14°	7°	0°	-3°

IRKUTSK

Jan	Feb	Mar	Apr	May	Jun	Jul	Aug	Sep	Oct	Nov	Dec
-20°	-30°	-10°	0°	16°	28°	36°	36°	12°	6°	-2°	-10°

ULANBAATAR

Jan	Feb	Mar	Apr	May	Jun	Jul	Aug	Sep	Oct	Nov	Dec
-18°	-28°	-10°	12°	26°	34°	38°	40°	18°	4°	0°	-9°

BEIJING

Jan	Feb	Mar	Apr	May	Jun	Jul	Aug	Sep	Oct	Nov	Dec
-12°	-16°	-8°	0°	16°	28°	34°	34°	18°	11°	0°	-9°

DESTINATION INFO

the inside story



THE TRANS-SIB IS THE TRIP OF A LIFETIME, AND GOES PAST PLACES YOU WILL NEVER PASS THROUGH AGAIN – SO DON'T LET THEM SLIP BY!

ST.PETERSBURG

Built to order for Tsar Peter the Great, the “wedding-cake” style of the Imperial City is a complete contrast with Moscow’s medieval onion-domes – in fact, you’ll barely see onion-domes in St Pete’s at all, except at the Church of the Spilt Blood. Renamed “Leningrad” for the duration of Soviet rule, the city was always a hang-out for the USSR’s “not quite complying” people – rock musicians, movie actors etc, and is still the “rock music capital” of Russia. If ballet or opera are your thing you could not be better served.

MOSCOW

Europe’s fastest-growing and third-largest city wears three hats – capital of medieval Muscovy, as capital of the ex-USSR, and as capital of today’s new Russia. If St Petersburg is San Francisco, then Moscow is NYC – big, brash, noisy, shameless, and a place where you can be whoever you want. The number one priority for Russians is “having a good time”, and as national capital, Moscow is Pleasure Central; alongside the nightclubs and bars is



every possible kind of food and music too. And all this is grafted onto the medieval citadel, the Kremlin, the museums, galleries, concert-halls and the Bol’shoi.

EKATERINBURG

Straddling the Europe/Asia divide, Ekaterinburg got rich on an C18th gold-rush here. The mixture of high-tech industry and high-flying educational institutes makes for a young population and it has a mojo all its own. Most infamously, the Tsar and all his family were murdered here in 1918 – the new Cathedral marks the spot. In the heart of the Ural Mts, there’s countryside and villages all around.

ALTAI

Siberia’s best-kept secret – a massive National Park area of mountains and rivers, offering amazing rafting, riding, and hiking... the 7/8-hr drive from any rail or airport helps protect its wilderness status. A growing New-Age Lifestyle movement is spreading here – inspired by ancient cave-paintings, and legends of the Lost Mountain Kingdom of Belovodia. We take our own vacations here.

IRKUTSK

One of Siberia’s oldest cities, a fur-trading centre since the C17th. The city’s regarded as the “home of the Trans-Siberian” since the track-building from East and West met here, and the first Trans-Sib train went through.

LISTVYANKA VILLAGE

Just an hour from Irkutsk, Listvyanka’s the most accessible point on Lake Baikal – both in distance and facilities. Amidst the timber-house village there are now some cafes and bars – but the wilds of Baikal open-up at the end of the village footpath if you want. Baikal is the world’s largest lake – the London-Edinburgh road won’t reach from its top to toe, and with 1.5 miles to the bottom, it’s the world’s deepest too.

BOLSHOE GOLOUSTNOE

So near to Listvyanka, but so different in character – almost unchanged from the C19th, due to poor road access. Bolshoe Goloustnoe village appeals to seekers of a lifestyle not yet quite past, and has a timeless serenity – fishing is still the main livelihood here, and





except for a tiny village store, there's little intrusion of C20th values.

ULAN-UDAY

Perhaps the most surprising halt on the T-Sib? Nomadic native asian peoples of Siberia were not an image the USSR cared for – the Buryats were “collectivised” by Stalin. Yet native song and tradition survived even Stalin’s policies. The soviet-era city (with the world’s largest bust of Lenin) contrasts with life in remote villages and Buddhist monasteries – so we include all three aspects in our

trips. Who ever imagined Buddhism in Siberia? Yet it’s been the native religion here for centuries.

VLADIVOSTOK

Vladivostok is a double surprise. First is that it’s so small – less than 500,000 inhabitants, giving a charming compact feel to the place. Next is the weather – hot coastal Sunbathing in summer, deep-frozen in winter. For those able to cope with poor onward connections, it’s the end-point of the original Trans-Sib route.

HUHEHOT

Imperial China divided Mongolia into two when it came as conqueror – Inner Mongolia, ruled as part of China, and Outer Mongolia... so distant and barren that only martial law was possible. Huhehot, capital of Inner Mongolia, was historically richer, but still today lies inside the borders of modern China. Must see’s are: The Grand Imperial Lamasery, the old Islamic Quarter & Mosque, and unique Wuta-Si Pagoda of a Thousand Buddhas.

HARBIN

Harbin’s an unfairly neglected Trans-Siberian stop. In the far north of China, it’s quite unlike the rest of the country – partly because it was built-up in the 1920’s by Russian nobles who’d fled Communism. The main (pedestrian) street is more like Petersburg than Peking. Harbin is most famous for the Ice Festival (Jan-Feb) – a huge outdoor event, which attracts visitors from all over the world.



MONGOLIA

legendary khanate of the gobi steppes



Mongolia's biggest problem is how to live up to the exotic myths and legends that surround it! Yes, it's an ancient Buddhist Kingdom - but the capital is a flourishing mixture of bars, nightclubs, patisseries and internet cafes. The Government strives to portray Mongolia as a modern country for foreign investment - and then a nomad rides into town and ties his horse up outside the Central Department Store. It's worth trying to think outside the box - because today's Mongolia happily combines ancient traditions with present-day services, and it's only the foreigners who can't get their head around this; for Mongolians, there's no problem at all!



Ulaanbaatar is fun to visit, but it isn't especially Mongolian. The sparse pasture of the steppes kept Mongolians on the move - the idea of "cities" is

fundamentally alien to Mongolian tradition. Ulaanbaatar (then called "Urga" - "Ulaanbaatar" means "Red Hero" and is a communist-era name) only sprang-up at the end of the C19th. If you want to see real Mongolia, you must head out of the city.

The majority of Mongolians don't live in cities at all - they pursue the continuing tradition of nomadic lifestyles that date back thousands of years. It's easy to become romantic about this, but in fact nomadic life is often harsh - Mongolia's bare steppes offer little shelter from biting winter winds (down to -45C in mid-winter) or scorching summer heat (up to +40C). Sanitation is an open ditch, and water may have to be brought many kilometres. We have trips which offer nomad-stays, but we emphasise that these are for hardy travellers - no compromise is made for you, you must fit around their living conditions.

Mongolian nomads still eat the simple and basic diet their forefathers ate - mutton and sheep-milk, and unsalted hard-dried cheese, with no vegetables - which might be interesting to try once or twice, but it quickly gets repetitive, and the fatty mutton is not to everyone's taste. Elstei provides an alternative - but also offers traditional Mongolian meals too. You have to be

ready for off-road jeep travel for long journeys - Mongolia has tracks rather than actual roads. Most Mongolians still live in gers - the traditional wood-framed felt tent of the steppes, whose design has not changed in thousands of years.

A great way to experience life in the Mongolian ger is to stay at Elstei Ger-Camp. The accommodation is entirely in traditional gers. Showers and toilets are available from April - October meeting modern standards (sorry to purists looking forward to crouching over a mosquito-infested trench). There is a café serving both traditional Mongolian meals and a choice of other food (including vegetarian). The location, although only one hour from Ulaanbaatar, is as remote as anywhere on the steppes, and there are great opportunities for walking - or riding, with local nomads as your instructors (you pay them locally).

Don't mistake Mongolia for Thailand or Cambodia - life here is harsher, due to the climatic extremes. The deep winter snows (2m and more) cut nomad families off for 4-5 months a year. All the more reason to celebrate when summer permits, and the Trial-Of-Skill-and-Strength games called Naadam date back to before Genghis

Khan himself (Genghis himself was famously crowned at the Naadam festival). Although the Communists "centralised" Naadam (to "keep an eye on it") to the second week in July, its origins as a local festival still continue, and local naadams still take place - there is even one at Elstei. Naadam 2005 Dates: National Naadam in Ulaanbaatar 11-13 July. Regional one-day Naadam at Elstei 13 September.

Mongolia is a sparsely-populated country and lacks good international transport connections, even with its neighbours - there is only a once-weekly train service to Beijing, for example (due to frosty relations - as China lays claim to large territories of Mongolia - they will not increase the timetable). You should note that this once-weekly train service does tend to create "bunching" of people waiting for it to depart from Ulaanbaatar - there is almost nothing we can do to prevent this, despite the headaches it causes us. Two ways of avoiding the peak-season log-jam (in September) would be to take the Inner-Outer Mongolia itinerary (which takes the more frequent short-hop cross-border train to the fascinating city of Huhetot, richly endowed by the T'ang Emperors) - or to travel earlier, when the weather is better anyhow?

RUSSIAN CITIES

an individual approach



Many large and populous countries have multiple “capital-sized” cities – NYC/Washington/L.A., Beijing/Shanghai, Delhi/Mumbai. Russia has always done this, and although the “official” capital has moved between Moscow and St Petersburg at different periods, in reality the role of Russian capital has always been shared between the two. Even in the grandest days of Empire, the Tsars would come from Petersburg to ancient Moscow to be crowned, married, or buried. You really have to view Moscow and St Petersburg as a pair – they’re completely contrasted. Seeing only one of them is only half the story.



HOW TO DESIGN YOUR OWN MOSCOW/PETERSBURG INDEPENDENT TRIP.

The Hotel rates include a three-night stay with breakfast (you’ll see nothing at all if you try less!) – additional night rates are available.

To spice up your stay we have transfers, walking tours with our excellent buddy guides and train prices between the two cities. These services are purchased separately so you can arrange your trip to your own specifications. If you yearn to avoid the herd, then this individual approach is for you.

IN MOSCOW

Awaiting your independent attention in Moscow – if you wish! – are, amongst much else:

- The Kremlin Moscow’s medieval citadel on Red Square – the ceremonial heart of the city.
- Pushkin Square the place to meet friends.
- Arbat Street souvenir shopping down this old pedestrian street.
- Kammergeisky Pereulok and Kuznetsky Most – chill-out in “Moscow’s Soho”.
- Tretyakov Gallery & Pushkin Fine Arts Museum – two must-see art collections.
- Izmailovsky Flea-Market.
- Bolshoi Theatre and seven other opera/ballet venues.

IN ST PETERSBURG

Whilst in St. Petersburg try, if you can, to find time to see:

- The Hermitage Collection the finest art collection in the world, displayed in the Winter Palace.
- The canals and waterways of the “Northern Venice”.
- The Russian Museum of Fine Art.
- The Peter & Paul Fortress – the Maximum-Security prison of the Tsarist era... the Tombs of the Tsars are inside the Fortress Cathedral.
- The Church on the Spilt Blood – and nearby, the Souvenir Bazaar.
- The art-house Club and Music scene.
- The Mariinsky Ballet and Opera, critically acclaimed as the finest in the world.

The cost of the visa administration and Russian visa invitation is included. In the Hotel rates, the visa fee is not. This is dependent on what nationality you are. Please see page 44 for the current visa costs.



MOSCOW HOTELS

pleasure central



TIFLIS HOTEL 4*

OSTOZHENKA, 32; METRO PARK KULTURY: The “restaurant with rooms” concept comes to Moscow – but when the restaurant is the most exclusive Georgian gourmet eatery in town, you know their hotel is going to be a little special? A select handful of rooms only, superbly tasteful in the Georgian style (that’s Georgia in the Caucasus – not the one with Atlanta and a Midnight Train) style, and on Ostozhenka – downtown Moscow’s most chic address. Your neighbours are the Pushkin Fine Arts Museum and the Cathedral of Christ the Saviour. Our prices are based on standard rooms, we are able to book rooms with Ostozhenka view and Fountain Yard view. Prices are available on request.

TRIP PRICE

	Single	Additional Nights	Twin	Additional Nights
01 Jan 2005-31 Dec 2005	£575	£195	£375	£125

PRICES ARE PER PERSON, AND INCLUDE BED & BREAKFAST FOR 3 NIGHTS.



ARBAT HOTEL 3*

PLOTNIKOV PEREULOK 12; METRO SMOLENSKAYA: We’ve finally got a deal at the Arbat. 3* downtown hotel. This one’s not open to the public, it’s owned by the Federal Govt – but they made an exception for us. Rooms are small and a little dowdy, but here you pay for location. In London terms you’re in the heart of Covent Garden – Arbat Street’s souvenir-hunting is outside your window, and adjacent is the immense soviet monolith of the Foreign Ministry, looking bizarrely like the “Ghostbusters” building – who ya gonna call? Book early, this one’s in hot demand.

TRIP PRICE

	Single	Additional Nights	Twin	Additional Nights
01 Jan 2005-31 Dec 2005	£425	£140	£325	£108

PRICES ARE PER PERSON, AND INCLUDE BED & BREAKFAST FOR 3 NIGHTS.

HOTEL ZARYA 3*

GOSTINICHNAYA UL 1; METRO PETROVSKO-RAZUMOVSKAYA: Zarya is home for us – we have our Moscow office at this hotel. Building 12 where the 3* rooms are located is decorated to western standard, in spick'n'span Germanic style. There’s a cheerful street market here, and although the metro station is a bit of a mouthful (“Petrovsko-Razumovskaya”) it’s just 4 mins walk past the market... a fifteen-minute ride takes you to the Circus, Pushkin Square, or the Kremlin.

TRIP PRICE

	Single	Additional Nights	Twin	Additional Nights
01 Jan 2005-31 Dec 2005	£165	£55	£135	£45

PRICES ARE PER PERSON, AND INCLUDE BED & BREAKFAST FOR 3 NIGHTS.

SPICING IT UP!

Linking the two cities together could not be simpler, with frequent, high quality sleeper trains between the two. Please see page 12, which lists a full range of additional services: which includes train tickets, transfers, and buddy guides.



ST PETERSBURG HOTELS

culture central



HOTEL VESTA 3*

92 NEVSKY PROSPEKT; METRO PLOSHAD' VOSTANIYA: Our old friends at Vesta have done it again! They've moved two blocks down the street, doubled the number of rooms and now they've all got air-con and private bathrooms. But still less than 20 rooms, charming family-run service from owner-managers who really care. Oh, and did we mention it has the best location in town? Book now, before the guidebooks find it. All located in a carefully-converted C19th apartment-house in a quiet courtyard 50m off Nevsky Prospekt.

TRIP PRICE

	Single	Additional Nights	Twin	Additional Nights
01 Jan 2005-30 Apr 2005	£255	£85	£180	£60
01 Oct 2005-31 Dec 2005	£255	£85	£180	£60
01 May 2005-30 Sep 2005	£285	£95	£210	£70

PRICES ARE PER PERSON, AND INCLUDE BED & BREAKFAST FOR 3 NIGHTS.

HOTEL ON 15YA LINIYA 2/3*

12 ULTCHAIKOVSKOGO; METRO: VASSILEOSTROVSKAYA: A new private boutique Hotel. The elegant location on St Basil's Island - 8 mins walk to metro, one-stop journey to Nevsky Prospekt, central avenue of the city. Only 8 spanking-new 3* guest-rooms, all with en-suite facilities, arranged in the small town house of a minor C19th nobleman. Breakfast buffet included, internet available, English speaking staff. 15 mins walk from hotel: Prince Menshikov's Palace (oldest in city), Kunstkamera (Chamber of Curiosities). Walk 5-10 mins further to St Isaac's, Bronze Horseman, Admiralty, Palace Square and the Hermitage.

TRIP PRICE

	Single	Additional Nights	Twin	Additional Nights
01 Jan 2005-30 Apr 2005	£225	£75	£165	£55
01 Oct 2005-31 Dec 2005	£225	£75	£165	£55
01 May 2005-30 Sep 2005	£255	£85	£195	£65

PRICES ARE PER PERSON, AND INCLUDE BED & BREAKFAST FOR 3 NIGHTS.

SPICING IT UP!

Linking the two cities together could not be simpler, with frequent, high quality sleeper trains between the two. Please see page 12, which lists a full range of additional services: which includes train tickets, transfers, and buddy guides.

BROTHERS KARAMAZOV HOTEL 3*+

11A SOCIALISTICHESKAYA STREET; METRO: VLADIMIRSKAYA: Our on-the-spot staff in Russia spend ages sleuthing the latest hotels, and here's a real gem. An all-new building with lovely large rooms, in the heart of Dostoyevsky's historic St Petersburg, off Zagorodny Prospekt (amidst all the latest restaurants, like Ginger and its neighbours). They only take individuals - no groups, and the charming personal service reflects that.

TRIP PRICE

	Single	Additional Nights	Twin	Additional Nights
01 Jan 2005-30 Apr 2005	£315	£75	£215	£55
01 Oct 2005-31 Dec 2005	£315	£75	£215	£55
01 May 2005-30 Sep 2005	£325	£85	£225	£65

PRICES ARE PER PERSON, AND INCLUDE BED & BREAKFAST FOR 3 NIGHTS.

HOTEL NEVA 2*+

TCHAIKOVSKY ST; METRO: CHERNYSHEVSKAYA: This eccentric pre-Revolutionary hotel has 3* renovated rooms but less good public areas - so we gave it a 2+* rating. Superb Old City location five minutes walk from Metro, the main sights are a walk away. (nb this hotel also has lower-grade unrenovated rooms - which we are not using, but have been written-up in guidebooks).

TRIP PRICE

	Single	Additional Nights	Twin	Additional Nights
01 Jan 2005-31 Dec 2005	£255	£85	£195	£65

PRICES ARE PER PERSON, AND INCLUDE BED & BREAKFAST FOR 3 NIGHTS.



SPICING IT UP

bringing it all together



GET MORE OUT OF YOUR TRIP WITH A BUDDY GUIDE

Get the inside-track on your destinations – our Russian Buddies are available to walk around with you, come-up with suggestions you may not have thought of – or help you on special projects of your own? We've helped people on ideas as diverse as: visiting Tchaikovsky's Country House in Klin; visiting Jewish heritage sites in Moscow; on the trail of famous locations in the Russian Revolution in St Petersburg and several others. We can walk your feet off in 3 hours, but the really determined can also book a full day of assistance (6 hours) if they want.



SLEEPER TRAIN SERVICES BETWEEN CITIES

We strongly recommend the overnight sleeper trains for your inter-city travel... because (i) they are the highest-category trains on the routes (ii) it saves you a night's hotel accommodation whilst on board (iii) they are friendly and atmospheric places which are the transport-of-choice for most Russians. We don't especially recommend the day train, but can book it on request.

MOSCOW/PETERSBURG

There are several different night-trains between Moscow and St Petersburg, but all of the ones we use depart

between 2300 and 2400, and arrive the next morning between 0800 and 0830.

We normally recommend trains which are "firmenny-klass" in Russia, which are superior-category trains. If you would prefer a standard-category train, we offer this alternative too.



WHITE NIGHTS FESTIVAL

The last week of June sees a large theatre festival in St. Petersburg, which brings colossal numbers of extra visitors - many hotels have surcharges. If you plan visiting then, we suggest booking as soon as possible! In point of fact since this is mostly Russian-language theatre, there is not so much to attract foreigners to this festival?

SERVICES

Buddy Guide Services (3 hours) Moscow or St Petersburg	£45
Buddy Guide Services (6 hours) Moscow or St Petersburg	£75
Car transfer on arrival - St Petersburg or Moscow SVO Airport	£55
Car Transfer on arrival - Moscow DME Airport	£65
Car transfer on departure	£55
Superior 1st-CI (Firmenny-klass) 2 berth rail tickets Moscow - St Petersburg or vice-versa	£125
Superior 2nd-CI (Firmenny-klass) 4 berth rail tickets Moscow - St Petersburg or vice-versa	£75
Standard 2nd-CI/4 berth rail tickets Moscow - St Petersburg or vice-versa	£50
Standard 1st-CI/2 berth rail tickets Moscow - St Petersburg or vice-versa	£90

MOSCOW & ST PETERSBURG EXCURSIONS

your short-cut to the inside story



Moscow and St Petersburg are classic European cities on everyone's want-to-see list – and they're really accessible places these days. However, there are still activities where the language-barrier can lock you out – an excursion not only helps you get the most out of them, but ensures you actually find the place, and get there on a day it's open too! When the information is **все по-русский** even finding your way can be a problem (so we'll usually arrange to meet you at a nearby metro station or rendezvous point). Also many activities (marked *) are only possible if pre-organised and don't accept casual visitors - even the Moscow Kremlin is now off-limits (for security reasons) unless you go with a

Licensed Guide.

- Excursions do not include transportation except where specifically indicated.
- Your own English-language Buddy Guide accompanies you on all the excursions and activities (including those where the venue/organisation also provides their own compulsory guide).

MOSCOW

- **KGB Museum ***
The official Museum of the KGB, housed in the Lubyanka itself - now the home of the FSB, the KGB's successor. You can only visit by prior arrangement, and you must take the tour with a serving FSB Officer as your



Guide here. The museum covers both the overseas espionage activities of the KGB and their role in turning the Tsarist political prison network into the Gulags. Questions are permitted. Closed weekends. Excursion: 2 hours. **£29 per person.**

- **Anti-KGB Museum ***
(The Andrey Sakharov Museum)
When the USSR's leading Nuclear Scientist refused to make The Bomb, he became a public enemy. The museum tells Sakharov's story, and of those many others who refused to obey. Closed Mons. Excursion 2 hrs. **£20 per person.**

- The Moscow Kremlin, regardless what your guidebook may say, as of October 2004 it became impossible to visit the Kremlin without a Licenced Guide – for security reasons. The Kremlin is Moscow's medieval citadel, comparable in scale and atmosphere with The Tower Of London. Highlights include the world's largest cannon and also the largest bell, and the centerpiece

of Cathedral Square – each cathedral here played a different role in the life of the Tsars – for baptisms, weddings, coronations, funerals. Closed Thurs & during State Ceremonial Visits. Excursion 2 hrs.

£30 per person

ST PETERSBURG

- **Museum of Russian Vodka.** This admirably hands-on museum not only shows you the secrets of making the finest vodka in the world - but lets you try the stuff too. The perfect kind of history-in-practice. (Tasting-session not included). Open daily. Excursion 2 hrs. **£20 per person.**
- **Museum of Russian political history + Museum of the History of Political Police.** Essential background for anyone wondering "how the USSR ever came to happen?" Rather more objective than the KGB Museum in Moscow. Closed Sat, Sun & Thurs. Excursion 2 hrs. **£25 per person.**
- **Tea at a Russian Home,** to include Russian tea with snacks and sweets. This is a tradition few visitors see – you not only try the tea, but hear about tea's long tradition in Russian society too. A unique chance to see how Russians live today. Activity 2.5 hours. **£18 per person.**
- * admission restricted to pre-arranged visitors only.





The Trans-Siberian Ghost Train? Although there's a Trans-Siberian Railway, there is no specific train called "The Trans-Siberian Express" - instead, there are several different trains running Moscow-Beijing or Moscow-Vladivostok, or shorter sections of the world's longest rail journey.

from
£180

ST PETERSBURG
MOSCOW

STARTING YOUR TRANS-SIB TRIP IN ST PETERSBURG...

the original trans-sib began from st petersburg and so should you, to see the contrast between the imperial splendour and siberian simplicity that existed both then and now.

3 nights/4 days



YOUR ITINERARY RUNS LIKE THIS

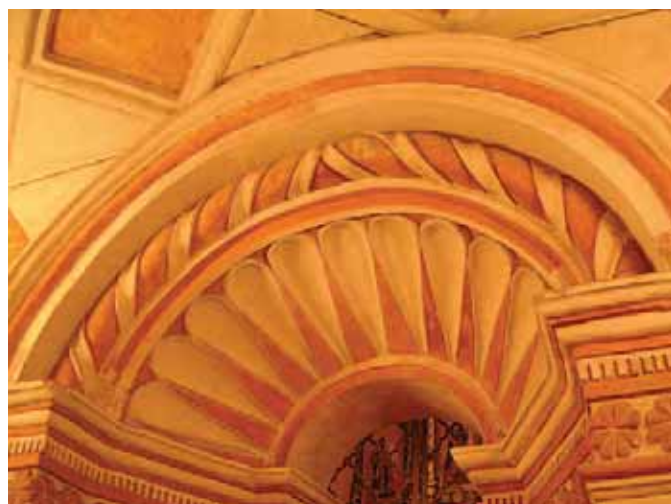
DAY 01 Arrival in St Petersburg! We whisk you by car directly to your hotel – your first night in St.Petersburg. One of our local staff will be on hand to offer you any assistance you may require today.

DAY 02 Breakfast. Your Buddy will meet you at the hotel to take you on a personal 3 hour walking tour of the city. The tour will take in all the main highlights, unless you have any special request-please say. Afternoon and evening – it's all in your hands!

DAY 03 Breakfast. Check out by 12 noon (you can leave your luggage at the Hotel). With a whole day free to fill with St Petersburg highlights.

- The Hermitage Collection –Winter Palace.
- The canals and waterways of the “Northern Venice”.
- The Russian Museum of Fine Art.
- The Peter & Paul Fortress – and the Tombs of the Tsars inside the Fortress Cathedral.
- The Church on the Spilt Blood . – and nearby, the Souvenir Bazaar. Own taxi to the station for late evening departure.

THESE PROGRAMMES ARE ONLY AVAILABLE TO CLIENTS WHO ARE BOOKING TRANS-SIBERIAN JOURNEYS WITH US.



INCLUDED IN THE TRIP:

CAR TRANSFER ON ARRIVAL: 2 Nights accommodation at the hotel of your choice.

MEAL BASIS: As stated.

BUDDY GUIDE : walking tour 3 hours. 2-Class 4-berth sleeper train to Moscow. (Option to upgrade to 1st Class, 2-berth Sleeper, see spicing it up) NB: No restaurant car or breakfast on this short overnight journey.

TRIP PRICE

DUE TO THE EVER GROWING POPULARITY OF ST.PETERSBURG.

WE REQUIRE YOU TO MAKE TWO HOTEL CHOICES.

Hotel Option: (For a full Hotel description please refer to page 10 & 11)	Meal Basis	1 Person	Additional Night per person	2 People (per person)	Additional Night per person	3 People (per person)	Additional Night per person
HOTEL VESTA 3*	BB	£315	£85	£215	£60	£215	£60
15YA LINIYA 3*	BB	£300	£75	£200	£55	£200	£55
THE BROTHERS 3*	BB	£315	£80	£215	£60	£215	£60
THE NEVA 2*+	BB	£280	£65	£180	£50	£180	£50

WHITE NIGHTS FESTIVAL: TAKES PLACE THE LAST TWO WEEKS OF JUNE.

TO SECURE A ROOM AT THIS TIME ADVANCE BOOKING IS ESSENTIAL.

01 MAY - 30 SEP PLEASE NOTE A SEASON SUPPLEMENT OF £10 PER PERSON IS APPLICABLE.

SPICING IT UP

2-berth 1st class St.Petersburg - Moscow	£55
Additional services of a buddy Guide 3 hours	£45
Additional services of a buddy Guide 6 hours	£75

FOR OUR RANGE OF DAY TRIP OPTIONS PLEASE SEE PAGE 13.

THE ULTIMATE TRANS-SIB

mountains, mongols, monasteries - this one has it all

25 night/26 day trip operational season: June - August

from
£2,190



YOUR ITINERARY RUNS LIKE THIS

DAY 01 Arrival in Moscow! We whisk you by car directly to your hotel – your first night in Moscow.

DAY 02 Moscow Calling! Your Moscow Buddy is on hand to smooth your path... at least until lunchtime! Afternoon and evening - it's all in your hands!

DAY 03 A full free day – take your pick of the best of Moscow! Mid-evening we take you to your waiting train – to Siberia!

DAY 04 Full day on train through the Ural Mts, arrival late evening in Ekaterinburg – car to Hotel.

DAY 05 Your choice of the following programs (one choice is included in your trip – no surcharges!).

SUMMERTIME CHOICES:

(check applicable difficulty-level for each)

(A) ROMANOV GRAVES (Europe/Asia Border Monument en-route). Car excursion to site where the Romanov bodies were hidden. 5-6 hours. No physical exertion involved.

(B) WALK IN THE TAIGA FOREST. The unique forest ecosystem of the Steppes, with car to/from. 6 hour walk. Good fitness req'd.

(C) SIBERIAN WILDERNESS

ADVENTURE. Combined soft raft (6km) and Forest Hike (12km) – optional cave visit. Good fitness req'd.

(D) SIBERIAN COUNTRYSIDE & HISTORIC VILLAGE. Visit to an old village now under a Preservation Order. Includes home-cooked lunch, exhibitions of craftlore, horsecart riding. 8-9 hours. No physical exertion involved.

(E) URALS MOUNTAIN BIKE ADVENTURE. All gear provided, for a 16km off-road course at Devil's Rock. Transport to/from included (40km). Fitness and bike skills req'd.

Option to either remain at your hotel until 01:00 (we hold your room on for late check-out) or check-out early-evening and check-out the Malachit Nightclub (admission tickets and bar-bill are yours, but we take you there and back) and then directly (with luggage) to station. Depart 03:00 eastwards...

DAY 06 Onwards towards Barnaul. Overnight onboard.

DAY 07 Meet guide on arrival in Barnaul and travel on public bus service (6 hrs) to Chermal Village in the

heart of the Altai Mts. Accom at family stay and late lunch. Afternoon walk and info about local Altaic people. Sauna and supper.

DAY 08 Car excursion to site of ancient cave- and cliff-paintings. Picnic lunch. Opportunity (small local cash payment) to ride Altai Mountain Horses. More information about the ancient Chuisky Tract - the route of Genghis Khan's messengers. Supper. (gear not needed on raft, can be packed and stored tonight).

DAY 09 Arrival at rafting launch-point, safety briefing and rafting know-how. Set off (with instructor & guide), some white-water. Picnic lunch stop en-route. Continue rafting the Katun River in afternoon - campfire supper and pitch tents for overnight. (Bring suitable clothes and footwear for rafting. All other gear & sleeping bags provided. Vegetarians must advise in advance!).

DAY 10 Continue rafting route, including some rapids. Picnic lunch at the riverside. Return by road to Chermal. Free time, sauna, supper.

DAY 11 After early breakfast depart to Novosibirsk by road by car (7-8 hrs). Accommodation in a hotel (supper independently - lots of choice in Novosibirsk).

DAY 12 Guided sightseeing walk of

Novosibirsk, then free time (own lunch and supper arrangements). Transfer to station for late evening train departure.

DAY 13 Continue eastwards on the Trans-Siberian towards Irkutsk.

BAIKAL PROGRAMMES:

(Choose one of the 2 options below)

Listvyanka is a lakeside village with one foot in the present – Bolshoe Goloustnoye is a more remote and timeless choice.

(1) SIBERIAN VILLAGE (Option One)

DAY 14 Arrival in Irkutsk and car (1hr) to Listvyanka Village (shore of Lake Baikal). Lunch, walking tour of the village including Lake Wildlife Museum. Then get it all off your chest the Siberian way – in the banya! (sauna). You'll be ready for your home-cooked supper after all that – then sleep like a log in a log cabin.

DAY 15 Choose one activity from the list, it's all included in the trip price!

(A) TAKING A SHORT SOFT TREK with a local guide in the Baikal-side forests.

(B) TAKE A FRESHWATER SCUBA DIVE IN LAKE BAIKAL (they say you gain a year of life if you dive in!) with

“Keep lots of space available on your digital camera - there aren't many places to burn a cd of your pics in the Siberian forests or the Mongolian Gobi.”

TOP TRANS-SIBERIAN TRAVEL TIPS NO 1



highly-qualified CMAS-instructors (requires PADI-1), 2 dives included.

(C) TAKE YOURSELF FOR A WALK

out of the village with a packed lunch and a book, and contemplate the vastness of the world's hugest lake. Sauna and supper after your exertions & maybe try the local bar? Overnight with host family.

DAY 16 Transfer to Irkutsk. Free time to explore on foot (we watch your bags) until evening departure to station and on by overnight train to Ulan-Uday. OR

(2) BIG CATS ADVENTURE TREK
(Option Two) Only available to two or more passengers travelling together.

DAY 14 Arrival in Irkutsk and by car to host family. Shower and breakfast, prepare for trekking (you can leave heavy baggage in Irkutsk). Departure by public bus to Goloustnoye Village at 18.hrs. Short trekking (3km), mid-evening campfire supper and overnight camping (tents) on shore of Lake Baikal. (Your trek guide will carry the tent - you carry only your own pack). **DAY 15** Trekking along the Baikal shore (25 km). Picnic lunch en-route. Make camp at Sennaya Bay, supper and overnight (tents).

DAY 16 Trek onwards to Bol'shie Koty ("Big Cats") Village (9km). Ride the city hydrofoil service to Irkutsk. Return to family stay and you are reunited with your baggage. Free time to visit the city. Transfer to station and depart

by overnight train to Ulan-Uday.

DAY 17 Arrival early morning in Ulan-Uday, car to Family Stay.

Car/guide trip to Atsagatsky Buddhist Lamasery. After the monastery, try cuisine of Buryatia for lunch with a village family. Return to Ulan-Uday. Supper and overnight. (Option to upgrade to 3* Hotel, at extra charge. Meal basis B&B).

DAY 18 Visit to the Ivolginsky Datsan (a much larger monastery). Lunch. Visit to Centre of Eastern Medicine (optional consultation). Supper and overnight.

DAY 19 Early transfer to the station and depart for Mongolia - midnight border crossing (with halt for formalities).

DAY 20 Early morning arrival in Ulaanbaatar. Chance for a quick shower, then a guided Walking Tour of the old part of the city. Depart by jeep to Bayan Gobi - on arrival supper and accommodation with local nomads (in ger tents). (NB. this is not a tourist camp - you are the guests of the nomads).

DAY 21 Onwards by jeep to ancient Karakorum (modern Harhorin) 8 hrs off-road driving. Picnic lunch en-route. Supper and overnight with local herdsmen (in ger tents).

DAY 22 Sightseeing by jeep in Bayan Gobi. Picnic lunch during 6-hr drive towards Ulaanbaatar, accommodation at Elstei Ger Camp (this is tourist-type accom - unlike with nomads). Supper and overnight.

DAY 23 Free day at Elstei Ger Camp - for walking, horse-riding (arrange/pay locally) or relaxing.

DAY 24 Return to Ulaanbaatar and check-in at 3* centrally located Hotel Bayangol. Free time to explore the city, own lunch and supper arrangements. Overnight.

DAY 25 Car transfer* to station, departure to Beijing via spectacular steppe scenery. Midnight border crossing (and stop for border formalities).

DAY 26 Thunder on across China - past the Great Wall. Mid-afternoon arrival into Beijing Central Station. Your trans-siberian journey comes to

an end. For services in China and beyond please see pages 38-43.

****ALL TRIPS ARE AVAILABLE IN REVERSE, PLEASE SEE OUR WEBSITE OR CONTACT US FOR DETAILS****
www.trans-siberian.co.uk

* if you are travelling on the same day as other passengers, we may substitute an air-conditioned minibus for this journey. This can happen - because there's only one train per week for the final leg into Beijing

INCLUDED IN THE TRIP:

TRAIN: 2-Class 4-berth rail for complete journey.

MOSCOW: Car trf arrival/departure/ 2 nts 3* Hotel B&B, buddy guide 3 hours.

EKATERINBURG: Car trf arrival/departure. 2 nts 3* Hotel B&B, *incl late check out. Walking tour, day trip.

ALTAI: Accom: in Chermal, family-run guesthouse with HB and picnic lunches; during rafting, camping in tents with FB camp meals; in Novosibirsk, tourist-class hotel with breakfast only. Transport: Barnaul-Chermal by intercity bus, all other transfers by private car.

LAKE BAIKAL: Choosing to stay out of the City and up at the Lake gives you the option to choose from two all inclusive programmes. Sleeping bags are provided

ULAN-UDAY: Car trf arrival/departure. 2 nts family stay, full board. Including excursions as per itinerary.

MONGOLIA: Optional walking tour of Ulaanbaatar. All transportation. 2 nights camping with Nomads. (full board) 2 nights tourist ger camp (full board) 1 night 3* Hotel Ulaanbaatar B&B. Sleeping bags are provided

VISAS REQUIRED FOR: RUSSIA, MONGOLIA & CHINA.

TRIP PRICE

	1 person	2 people	3-9 people
FULL ON	£3,000	£2,290	£2,190

SPICING IT UP

	1 person	2 people	3-9 people
Extra Night Moscow	£55	£45	£45
Upgrading to 1st Class 2-berth Rail	£449	£449	£449
Upgrade to Hotel in Ulan-Uday B&B	£50	£40	£40

THESE ARE THE DATES WHEN THIS ITINERARY WORKS

(it's not a group trip - these are when timetable combinations work out for it)

26-DAY ITINERARY

2005 Jun 06,20 Jul 04,18 Aug 08,22* 2006 Jun 12,26

*£30.00 supplement applies on above date for Our Mini Naadam festival see page 8 for full details



THE MAMMOTH TRANS-SIB

the complete set of famous stops

21 night/22 day trip 22 night/23 day trip

from
£1,824



YOUR ITINERARY RUNS LIKE THIS

DAY 01 Arrival in Moscow! We whisk you by car directly to your hotel – your first night in Moscow.

DAY 02 Moscow Calling! Your Moscow Buddy is on hand to smooth your path... at least until lunchtime! Afternoon and evening - it's all in your hands!

DAY 03 A full free day – take your pick of the best of Moscow! Mid-evening we take you to your waiting train – to Siberia!

DAY 04 Full day on train through the Ural Mts, arrival late evening in Ekaterinburg - car to Hotel.

DAY 05 Walking Tour of Ekaterinburg with local guide. Afternoon and evening free to explore further.

DAY 06 Your choice of the following programs (one choice is included in your trip - no surcharges!)

SUMMERTIME CHOICES

(check applicable difficulty-level for each)

(A) ROMANOV GRAVES (& Europe/Asia Border Monument en-route). Car excursion to site where the Romanov bodies were hidden. 5-6 hours. No physical exertion involved.

(B) WALK IN THE TAIGA FOREST
The unique forest ecosystem of the Steppes, with car to/from. 6 hour walk. Good fitness req'd

(C) SIBERIAN WILDERNESS ADVENTURE Combined soft raft (6km) and Forest Hike (12km) - optional cave visit. Good fitness req'd.

(D) SIBERIAN COUNTRYSIDE & HISTORIC VILLAGE Visit to an old village now under a Preservation Order. Includes home-cooked lunch, exhibitions of craftlore, horsecart riding. 8-9 hours. No physical exertion involved.

(E) URALS MOUNTAIN BIKE ADVENTURE All gear provided, for a 16km off-road course at Devil's Rock. Transport to/from included (40km). Fitness and bike skills req'd.

Option to either remain at your hotel until 02:00 (we hold your room on for late check-out) or check-out early-evening and chill-out in the Malachit Nightclub (admission tickets and bar-bill are yours, but we take you there and back) and then directly (with luggage) to station. Depart 04:00 eastwards....

DAY 07 & 08 Onwards via Novosibirsk and Krasnoyarsk to Irkutsk

BAIKAL PROGRAMMES

(Choose one of the 2 options below)

(1) SIBERIAN VILLAGE (Option One)

DAY 09 Arrival in Irkutsk and car (1hr) to Listvyanka Village (shore of Lake Baikal). Lunch, walking tour of the village including Lake Wildlife Museum. Then get it all off your chest the Siberian way - in the banya! (sauna). You'll be ready for your home-cooked supper after all that - then sleep like a log in a log cabin.

DAY 10 Choose one activity from the list, its all included in the trip price!

(A) TAKING A SHORT SOFT TREK with a local guide in the Baikal-side forests.

(B) TAKE A FRESHWATER SCUBA DIVE in Lake Baikal (they say you gain a year of life if you dive in!) with highly-qualified CMAS-instructors (requires PADI-1), 2 dives included.

(C) TAKE YOURSELF FOR A WALK out of the village with a packed lunch and a book, and contemplate the vastness of the world's hugest lake. Then get it all off your chest the Siberian way – in the banya! (sauna). You'll be ready for your home-cooked supper after all that – then sleep like a log in a log cabin.

IF YOU'VE CHOSEN THE 23-DAY VERSION OF THE ITINERARY, THIS IS YOUR EXTRA DAY!

(DAY 11) Day entirely free at Lake Baikal – breakfast and supper with your host family – overnight.

IF YOU'VE CHOSEN THE 22-DAY VERSION OF THE ITINERARY, YOUR ITINERARY CONTINUES LIKE THIS:

DAY 11 (12) Transfer to Irkutsk. Free time to explore on foot (we watch your bags) until evening departure to station and on by overnight train to Ulan-Uday.°



OR

(2) BIG CATS ADVENTURE TREK (Option Two) Available 15th June to 1st September. Only available for two or more passengers travelling together.

DAY 09 Arrival in Irkutsk and by car to host family. Shower and breakfast, prepare for trekking (you can leave heavy baggage in Irkutsk). Departure by public bus to Goloustnoye Village at 18hrs. Short trekking (3km),

“There’s now a shower available on board - at least whilst your train is within Russia (despite what it says in your guidebook). One visit costs £1-2, and helps you stay smelling sweet during your trip.”

TOP TRANS-SIBERIAN TRAVEL TIPS NO 2

mid-evening campfire supper and overnight camping (tents) on shore of Lake Baikal. (Your trek guide will carry the tent – you carry only your own pack).

DAY 10 Trekking along the Baikal shore (25 km). Picnic lunch en-route. Make camp at Sennaya Bay, supper and overnight (tents).

IF YOU’VE CHOSEN THE 23-DAY VERSION OF THE ITINERARY, THIS IS YOUR EXTRA DAY.

(DAY 11) Trek onwards to Bol’shie Koty (“Big Cats”) Village (9km). Ride the city hydrofoil service to Listvyanka Free time to explore the village. Supper, overnight with family host.

IF YOU’VE CHOSEN THE 22-DAY VERSION OF THE ITINERARY, YOUR ITINERARY CONTINUES LIKE THIS

DAY 11 (12) Breakfast with host family, transfer to Irkutsk City. Return to family stay and reunited with your baggage. Free time to visit the city. Supper. Transfer to station and depart by overnight train to Ulan-Uday.

DAY 12 (13) Arrival early am in Ulan-Uday, car to Family Stay. Car/guide trip to Atsagatsky Buddhist Lamasery. After the monastery, try cuisine of Buryatia for lunch with a village family. Return to Ulan-Uday. Supper and overnight. (Option to upgrade to 3* hotel, at extra charge. Meal basis B&B).

DAY 13 (14) Visit to the Ivolginsky Datsan (a much larger monastery). Lunch. Visit to Centre of Eastern Medicine (optional consultation). Supper and overnight.

DAY 14 (15) Early transfer to the station and depart for Mongolia –

midnight border crossing (with halt for formalities).

DAY 15 (16) Arrival in Ulaanbaatar.

Car to hotel. Guided walk of the old city centre. Depart from city to stay in Gers with herdsmen (nb this is not a tourist camp – you are the guests of the nomads). Traditional supper, and overnight.

DAY 16 (17) Jeep trip into Bayan Gobi (all meals included). Supper and overnight with herdsmen in Gers.

DAY 17 (18) Jeep trip onwards to ancient Karakorum (modern Harhorin) – 8 hours off-road driving, picnic lunch en-route. Supper and overnight in gers with local herdsmen.

DAY 18 (19) Sightseeing in the Gobi. Picnic lunch. Return towards Ulaanbaatar, drive to Elstei Ger Camp. Supper and overnight in “tourist” gers (there are wc and shower facilities at the camp – unlike with herdsmen).

DAY 19 (20) Free day at Elstei Ger Camp – for walking, horse-riding (arrange/pay locally) or relaxing. Supper and overnight.

DAY 20 (21) Return to Ulaanbaatar. Day free to explore the city. Overnight at centrally-located 3* hotel.

DAY 21 (22) Car transfer* to station, catch the train to Beijing. Spectacular scenery en-route. Midnight border crossing.

DAY 22 (23) Thunder on across China – past the Great Wall. Mid-afternoon arrival into Beijing Central Station. Your trans-siberian journey comes to an end. For services in China and beyond please see pages 38-43.



****ALL TRIPS ARE AVAILABLE IN REVERSE, PLEASE SEE OUR WEBSITE OR CONTACT US FOR DETAILS****
www.trans-siberian.co.uk

* if you are travelling on the same day as other passengers, we may substitute an air-conditioned minibus for this journey. This can happen - because there’s only one train per week for the final leg into Beijing

INCLUDED IN THE TRIP:

TRAIN: 2-Class 4-berth rail for complete journey.

MOSCOW: Car trf arrival/departure/ 2 nts 3* Hotel B&B, buddy guide 3 hours.

EKATERINBURG: Car trf arrival/departure. 2 nts 3* Hotel B&B, *incl late check out. Walking tour, day trip.

LAKE BAIKAL: Choosing to stay out of the City and up at the Lake gives you the option to choose from two all inclusive programmes.

If camping Sleeping bags are provide

ULAN-UDAY: Car trf arrival/departure. 2 nts family stay, full board. Including excursions as per itinerary.

MONGOLIA: Optional walking tour of Ulaanbaatar. 1 night 3* Hotel Ulaanbaatar B&B. All transportation. 2 nights camping with Nomads. (full board), 2 nights tourist ger camp (full board), 1 night 3* Hotel Ulaanbaatar B&B. Sleeping bags are provided

VISAS REQUIRED FOR: RUSSIA, MONGOLIA & CHINA.

TRIP PRICE

	1 person	2 people	3-9 people
FULL ON	£1,999	£1,824	£1,624

SPICING IT UP

	1 person	2 people	3-9 people
Extra Night Moscow	£55	£45	£45
Upgrading to 1st Class 2-berth Rail	£449	£449	£449
Hotel Upgrade Irkutsk City	£40	£30	£30
Hotel Upgrade Ulan-Uday	£50	£40	£40

THESE ARE THE DATES WHEN THIS ITINERARY WORKS

22-DAY ITINERARY

2005 May 13,27 Jun 03,17 Jul 01,15,29 Aug 05,19 Sep 09 **2006** May 05,19 Jun 09,23 **2006** May 05,19 Jun 09,23

23-DAY ITINERARY**

2005 May 05,19 Jun 09,23 Jul 07,21 Aug 11,25* Sep 01,15 **2006** May 11,25 Jun 01,15,29

*£30.00 supplement applies on above date for Our Mini Naadam festival see page 8 for full details

**Supplement per person for the extra night is £45 for one, £30 for two or more



THE EPIC TRANS-SIB

classic combo plus real nomadic mongolia

17 nights/18 days 18 nights/19 days operational season may - sept

from
£1,239

MOSCOW
IRKUTSK
ULANBAATAR
BEIJING



YOUR ITINERARY RUNS LIKE THIS

DAY 01 Arrival in Moscow! We whisk you by car directly to your hotel - your first night in Moscow.

DAY 02 Moscow Calling! Your Moscow Buddy is on hand to smooth your path... at least until lunchtime! Afternoon and evening - it's all in your hands!

DAY 03 A full free day take your pick of the best of Moscow! Mid-evening we take you to your waiting train - to Siberia!

DAY 04 The Trans-Sib line leads you past Kazan and Ekaterinburg...

DAY 05 then onwards into Siberia itself, via Novosibirsk...

DAY 06 across the River Yenisei, at Krasnoyarsk...

DAY 07 arrive in Irkutsk: Take your choice of program from the two options.



BAIKAL PROGRAMME

The half-way point - two different ways to enjoy your stay!

Listvyanka is a lakeside village with

one foot in the present - Bolshoe Goloustnoye is a more remote and timeless choice.

(1) SIBERIAN VILLAGE (Option One).

DAY 07 Car directly from Station (1hr hour transfer) to Lake Baikal. Stay in an authentic Siberian log-cabin izba as part of the extended family. Lunch. See the village, the old Church, and the Lake Wildlife Museum - with your friendly local guide. Then get it all off your chest the Siberian way - in the banya! (sauna). You'll be ready for your home-cooked supper after all that - then sleep like a log in a log cabin.

DAY 08 Choose one activity from the list, its all included in the trip price!

(A) SOFTIES TREK through the Taiga Forest - and a Forester Guide to explain the wildlife, ecosystem and lore of the Taiga (May-Oct).

(B) SIBERIAN SCUBA - a freshwater dive in the world's Greatest Lake, with top CMAS-qualified instructors and pro-level gear provided (requires PADI-1). (May-Oct) 2 dives included. (Feb-Mar). Ice Diving. 1 dive included.

(C) OR DO YOUR OWN THING - maybe take off on a Cliffside walk, mosey around the village, ride the local hydrofoil, or gain a year of life (so they say?) by taking a dip in Baikal. Sauna and Supper after your exertions - & maybe try the local bar? Overnight with host family.

DAY 09 Entirely free at Listvyanka (Breakfast & Supper included) Overnight with host family.

IF YOU HAVE CHOSEN THE 19 DAY VERSION OF THE ITINERARY THIS IS YOUR EXTRA DAY!

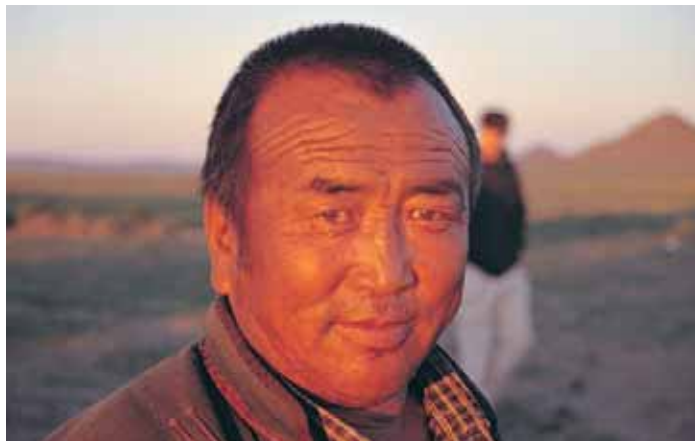
(DAY 10) Day free at Listvyanka overnight with host family. (Breakfast & Supper included)

IF YOU HAVE CHOSEN THE 18 DAY VERSION OF THE ITINERARY, YOUR ITINERARY LIKES THIS:



DAY 10 (11) Car transfer to Irkutsk. Free time to explore on foot (we watch your bags) until evening departure to station and on by overnight train to Ulanbaatar.

(2) BIG CATS ADVENTURE TREK (Option Two) Available 15th June to 1st September. Only available for two or more passengers travelling together.



“There’s a Restaurant Car on all the main trains - as well as serving meals, it functions as a social area and bar, and is a great place to make friends with your fellow-passengers on board.”

TOP TRANS-SIBERIAN TRAVEL TIPS NO 3



DAY 07 Arrival in Irkutsk and by car to family hosts in Irkutsk. Shower and breakfast, prepare for trekking (you can leave heavy baggage in Irkutsk). Departure by public bus to Goloustnoye Village at 18.hrs. Short trekking (3km), mid-evening campfire supper and overnight camping (tents) on shore of Lake Baikal. (Your trek guide will carry the tent – you carry only your own pack).

DAY 08 Trekking along the Baikal shore (25 km). Picnic lunch en-route. Make camp at Sennaya Bay, supper and overnight (tents).

DAY 09 Day at leisure at Sennaya Bay – a chance to relax, swim, sunbathe, read, write your postcards. Evening supper and overnight. (tents).

IF YOU’VE CHOSEN THE 19-DAY VERSION OF THE ITINERARY, THIS IS YOUR EXTRA DAY.

(DAY 10) Trek onwards to Bol’shie Koty (“Big Cats”) Village (9km). Ride the city hydrofoil service to Listvyanka Free time to explore the village. Supper, overnight with family host.

IF YOU’VE CHOSEN THE 18-DAY VERSION OF THE ITINERARY, YOUR ITINERARY CONTINUES LIKE THIS

DAY 10 (11) Breakfast with host family, transfer to Irkutsk City. Return to family stay and reunited with your baggage. Free time to visit the city. Supper. Transfer to station and depart by overnight train to Ulanbaatar.

DAY 11 (12) On board to Mongolia – (midnight border crossing).

DAY 12 (13) Early morning arrival in Ulaanbaatar. Chance for a quick shower, then a guided Walking Tour of the old part of the city. Depart by jeep to Bayan Gobi – on arrival supper and accommodation with local nomads (in ger tents).

(NB. This is not a tourist camp – you are the guests of the nomads).



DAY 13 (14) Onwards by jeep to ancient Karakorum (modern Harhorin) 8 hrs off-road driving. Picnic lunch en-route. Supper and overnight with local herdsmen (in ger tents).



DAY 14 (15) Sightseeing by jeep in Bayan Gobi. Picnic lunch during 6-hr drive towards Ulaanbaatar, accommodation at Elstei Ger Camp (this is tourist-type accom – unlike with nomads). Supper and overnight.

DAY 15 (16) Free day at Elstei Ger Camp - for walking, horse-riding (arrange/pay locally) or relaxing.

DAY 16 (17) Return to Ulaanbaatar and check-in at 3* centrally located Hotel Bayangol. Free time to explore the city, own lunch and supper arrangements. Overnight.

DAY 17 (18) Car transfer to station* departure to Beijing via spectacular steppe scenery. Midnight border crossing (and stop for border formalities).

DAY 18 (19) Thunder on across China – past the Great Wall. Mid-afternoon arrival into Beijing Central Station. Your trans-siberian journey comes to an end. For services in China and beyond please see pages 38-43.

****ALL TRIPS ARE AVAILABLE IN REVERSE, PLEASE SEE OUR WEBSITE OR CONTACT US FOR DETAILS****
www.trans-siberian.co.uk

* if you are travelling on the same day as other passengers, we may substitute an air-conditioned minibus for this journey. This can happen – because there’s only one train per week for the final leg into Beijing

INCLUDED IN THE TRIP:

TRAIN: 2-Class 4-berth rail for complete journey.

MOSCOW: Car trf arrival/departure/ 2 nts 3* Hotel B&B, buddy guide 3 hours.

LAKE BAIKAL: Choosing to stay out of the City and up at the Lake gives you the option to choose from two all inclusive programmes.

If camping sleeping bags are provided.

MONGOLIA: Optional walking tour of Ulaanbaatar. All transportation. 2 nights camping with Nomads. (full board) 2 nights tourist ger camp (full board) 1 night 3* Hotel Ulaanbaatar B&B. Sleeping bags are provided.

VISAS REQUIRED FOR: RUSSIA, MONGOLIA & CHINA.

TRIP PRICE

	1 person	2 people	3-9 people
FULL ON	£1539	£1339	£1239

SPICING IT UP

	1 person	2 people	3-9 people
FULL ON Extra Night Moscow	£55	£45	£45
Upgrading to 1st Class 2-berth Rail	£399	£399	£399
Hotel Upgrade Irkutsk City	£40	£30	£30

THESE ARE THE DATES WHEN THIS ITINERARY WORKS

18-DAY ITINERARY

2005 May 17,31 Jun 07,21 Jul 05,19 Aug 09,23 Sep 13 **2006** May 09,23 Jun 13,27

19-DAY ITINERARY**

2005 May 09,23 Jun 13,27 Jul 11,25 Aug 15,29* Sep 05,19 **2006** May 15,29 Jun 05,19

*£30.00 supplement applies on above date for Our Mini Naadam festival see page 8 for full details

**Supplement per person for the extra night is £45 for one, £30 for two or more

THE BIG TRANS-SIB

a great siberia & mongolia combo

14 nights/15 days 15 nights/16 days

from
£885

MOSCOW
IRKUTSK
ULANBAATAR
BEIJING



YOUR ITINERARY RUNS LIKE THIS

DAY 01 Arrival in Moscow! We whisk you by car directly to your hotel - your first night in Moscow.

DAY 02 Moscow Calling! Your Moscow Buddy* is on hand to smooth your path... at least until lunchtime! Afternoon and evening - it's all in your hands!

DAY 03 A full free day take your pick of the best of Moscow!

Mid evening we take you* to your waiting train - to Siberia!

DAY 04 the Trans-Sib line leads you past Kazan and Ekaterinburg...

DAY 05 then onwards into Siberia itself, via Novosibirsk...

DAY 06 across the River Yenisei, at Krasnoyarsk...

DAY 07 arrive in Irkutsk

Full-On: Take your choice of program from the two options. No Frills: Car to family homestay for 3 nts in Irkutsk - Car trf to station on departure.

BAIKAL PROGRAMME

The half-way point - two different ways to enjoy your stay!

Listvyanka is a lakeside village with one foot in the present - Bolshoe Goloustnoye is a more remote and timeless choice.

(1) SIBERIAN VILLAGE
(option one)



DAY 07 Car directly from Station (1hr hour transfer) to Lake Baikal. Stay in an authentic Siberian log-cabin izba as part of the extended family. Lunch. See the village, the old Church, and the Lake Wildlife Museum - with your friendly local guide. Then get it all off your chest the Siberian way - in the banya! (sauna). You'll be ready for your home-cooked supper after all that - then sleep like a log in a log cabin.

DAY 08 Choose one activity from the list, its all included in the trip price!

(A) SNOWMOBILE TRIP (2 hrs) with a local guide - through the forest, or even out over the deep-frozen lake!(Dec-Apr only).

(B) SOFTIES TREK through the Taiga Forest - and a Forester Guide to explain the wildlife, ecosystem and lore of the Taiga (May-Oct).

(C) SIBERIAN SCUBA a freshwater dive in the world's Greatest Lake, with top CMAS-qualified instructors and pro-level gear (requires PADI-1). (May-Oct). 2 dives included (Feb-Mar). Ice Diving. 1 dive included.

(D) OR DO YOUR OWN THING - maybe take off on a Cliffside walk, mosey around the village, ride the local hydrofoil, or gain a year of life (so they say?) by taking a dip in Baikal. Sauna and Supper after your exertions - & maybe try the local bar? Overnight with host family.

IF YOU'VE CHOSEN THE 16-DAY VERSION OF THE ITINERARY, THIS IS YOUR EXTRA DAY!

(DAY 09) Entirely free at Listvyanka (Breakfast & Supper included) Overnight with host family.

IF YOU'VE CHOSEN THE 15-DAY VERSION OF THE ITINERARY, YOUR ITINERARY CONTINUES LIKE THIS:

DAY 09 (10) Car to Irkutsk (1hr) and stay in a city apartment with a local family, in soviet-modern city style. Day free to explore, dinner with host family. (Or upgrade to tourist-class hotel if you rate comfort over authenticity, and prefer to dine out this evening instead?).

DAY 10 (11) Early morning car transfer to the station - you're heading out of Russia tonight! Late night border crossing (2+ hours halt for formalities).



“All of Siberia lies in Asia - don't miss out on Siberia's Asian legacies, such as Buddhist monasteries near Ulan-Uday, and native Asiatic peoples like the Buryats.”

TOP TRANS-SIBERIAN TRAVEL TIPS NO 4

(2) FISHERMAN'S CAPE OF LAKE BAIKAL (Option Two)

DAY 07 Car directly from Station to the remoter village of Bolshoe Goloustnoye (110km on rural roads). Your local guide shows you the village, the Old Church, and lake shoreline. Get the 20th Century out of your system in a real Russian banya (sauna) which will sharpen your appetite for home-cooked food for supper. Sleep soundly - the modern world is far, far away.

DAY 08 Leisurely lakeside walk (8km) to Ushkani Cape, and visit our friends the fishermen for lunch at their cabin. A gentle return walk (see a dried-up Lake on the way) for sauna and supper in the hushed silence away from the tourist throng.

IF YOU'VE CHOSEN THE 16-DAY VERSION OF THE ITINERARY, THIS IS YOUR EXTRA DAY!

(DAY 09) Breakfast. Walk back to Bolshoe Goloustnoye. Lunch. Sauna. Free time. Dinner. Overnight.

IF YOU'VE CHOSEN THE 15-DAY VERSION OF THE ITINERARY, YOUR ITINERARY CONTINUES LIKE THIS:

DAY 09 (10) By car to Irkutsk (110km) and stay in a city apartment with a local family, in soviet-modern city style. Day free to explore the city, dinner with host family. (Or upgrade to tourist-class hotel if you rate comfort over authenticity, and prefer to dine out this evening instead?).

DAY 10 (11) Early car to the station – you're heading out of Russia tonight! Late night border crossing (2+ hours halt for formalities).

DAY 11 (12) Mid-morning arrival in Outer Mongolia! Shower, breakfast, then by car* to a Mongolian Ger Camp – with accommodation in traditional Mongolian wood-framed felt tents (gers). The huge area of the Mongolian steppes around the camp is yours to explore. Lunch and Supper are included (yes, there are vegetarian options too). [No Frills: – car transfer to 1* Hotel in Ulaanbaatar for a 3-night independent stay].

DAY 12 (13) Horse-riding is available (for a small local charge) with local herdsmen leaders – or walk, relax, or sometimes play traditional Mongolian sports? (FB incl).

DAY 13 (14) Back to Ulaanbaatar. Your local Mongolian Buddy will help you find the very best of “UB”.

Overnight at the three star hotel giving you time to sample Mongolian cuisine for supper.

DAY 14 (15) Car transfer* to your departing Beijing-bound train this morning. Midnight border crossing, and onwards into China!

DAY 15 (16) Thunder on across China – past the Great Wall. Mid-afternoon arrival into Beijing Central Station. Your trans-siberian journey comes to an end. For services in China and beyond please see pages 38 -43.



****ALL TRIPS ARE AVAILABLE IN REVERSE, PLEASE SEE OUR WEBSITE OR CONTACT US FOR DETAILS****
www.trans-siberian.co.uk

* if you are travelling on the same day as other passengers, we may substitute an air-conditioned minibus for this journey. This can happen – because there's only one train per week for the final leg into Beijing

† not included on the no-frills version of the trip

**INCLUDED IN THE TRIP:
FULL ON TRIP**

TRAIN: 2-Class 4-berth rail for complete journey.

MOSCOW: Car trf arrival/departure/ 2 nts 3* Hotel B&B, buddy guide 3 hours.

LAKE BAIKAL: Choosing to stay out of the City and up at the Lake gives you the option to choose from two all inclusive programmes.

ULAANBAATAR: All car trfs, 2 nts Mongolian Ger Camp accommodation (full board) 1 nt 3* hotel Ulaanbaatar, B&B. Optional Walking tour of Ulaanbaatar.

VISAS REQUIRED FOR: RUSSIA, MONGOLIA & CHINA

NO FRILLS TRIP

TRAIN: 2-Class 4-berth rail for complete journey.

MOSCOW: Car trf arrival/2 nts 1* Hotel room-only.

IRKUTSK: Car trf arrival/departure. 3 nights family stay accommodation. Bkfst & evening meal.

ULAANBAATAR: All car trfs, 3 nts 1* hotel Ulaanbaatar. B&B.

TRIP PRICE

	1 person	2 people	3-9 people
FULL ON	£1235	£1135	£1035
NO FRILLS	£1085	£985	£885

SPICING IT UP

	1 person	2 people	3-9 people
FULL ON extra nights Moscow	£55	£45	£45
NO FRILLS extra nights Moscow	£35	£30	£30
Upgrading to 1st Class 2-berth Rail	£399	£399	£399
Upgrading to Hotel Irkutsk City	£40	£30	£30

THESE ARE THE DATES WHEN THIS ITINERARY WORKS

15-DAY ITINERARY

2005 Jan 07,21 Feb 11,25 Mar 11,25 Apr 15,29 May 13,27 Jun 03,17

Jul 01,15,29 Aug 05,19 Sep 09,23 Oct 07,21 Nov 11,25 Dec 09,23

2006 Jan 13,27 Feb 03,17 Mar 03,17,31 Apr 07,21 May 05,19 Jun 09,23

16-DAY ITINERARY**

2005 Jan 13,27 Feb 03,17 Mar 03,17,31 Apr 07,21 May 05,19 Jun 09,23 Jul 07,21

Aug 11,25 Sep 15,29 Oct 13,27 Nov 03,17 Dec 01,15,29 **2006** Jan 05,19 Feb 09,23

Mar 09,23 Apr 13,27 May 11,25 Jun 15,29

**Supplement per person for the extra night is £45 for one, £30 for two or more

THE SIBERIAN EXPERIENCE

a great siberian adventure

12 nights/13 days 13 nights/14 days

from
£699

MOSCOW
IRKUTSK
BEIJING



YOUR ITINERARY RUNS LIKE THIS

DAY 01 Arrival in Moscow! We whisk you by car directly to your hotel – your first night in Moscow.

DAY 02 Moscow Calling! Your Moscow Buddy* is on hand to smooth your path... at least until lunchtime!

Afternoon and evening – it's all in your hands!

DAY 03 A full free day take your pick of the best of Moscow! Mid-evening we take you* to your waiting train – to Siberia!

DAY 04 The Trans-Sib line leads you past Kazan and Ekaterinburg...

DAY 05 Then onwards into Siberia itself, via Novosibirsk...

DAY 06 across the River Yenisei, at Krasnoyarsk...

DAY 07 - 10 No Frills: Car to homestay for 3 nts half board in Irkutsk. Transfer to station on departure.

Full On:

DAY 07 Car directly from Station (1hr hour transfer) to Lake Baikal. Stay in an authentic Siberian log-cabin izba as part of the extended family. Lunch. See the village, the old Church, and the Lake Wildlife Museum – with your friendly local guide. Then get it all off your chest the Siberian way – in the banya! (sauna). You'll be ready for your home-cooked supper after all that – then sleep like a log in a log cabin.

DAY 08 Choose one activity from the list, its all included in the trip price!

(A) SNOWMOBILE TRIP (2 hrs) with a local guide - through the forest, or even out over the deep-frozen lake! (Dec-Apr only).

(B) SOFTIES TREK through the Taiga Forest - and a Forester Guide to explain the wildlife, ecosystem and lore of the Taiga (May-Oct).

(C) SIBERIAN SCUBA a freshwater dive in the world's Greatest Lake, with top CMAS-qualified instructors and pro-level gear (requires PADI-1). (May-Oct) 2 dives included. (Feb-Mar) Ice diving 1 dive included.

(D) OR DO YOUR OWN THING maybe take off on a Cliffside walk, mosey around the village, ride the local hydrofoil, or gain a year of life (so they say?) by taking a dip in Baikal. Sauna and Supper after your exertions - & maybe try the local bar?



“Don't miss Lake Baikal - the world's biggest and deepest Lake... trek around it, sail on it, ski on it, or even take a freshwater scuba dive.”

TOP TRANS-SIBERIAN TRAVEL TIPS NO 5

IF YOU'VE CHOSEN THE 14-DAY VERSION OF THE ITINERARY, THIS IS YOUR EXTRA DAY!

DAY 09 Entirely free at Listvyanka (Breakfast & Supper included).

IF YOU'VE CHOSEN THE 13-DAY VERSION OF THE ITINERARY, YOUR ITINERARY CONTINUES LIKE THIS:



Siberia to the Chinese border.

DAY 12 (13) On board through Manchuria sightings of the great wall and onwards to Beijing.

DAY 13 (14) Thunder on across China Mid-afternoon arrival into Beijing Central Station. Your trans-



DAY 09 (10) Car to Irkutsk (1hr) and stay in a city apartment with a local family, in soviet-modern city style. Day free to explore the city, dinner with host family. (Or upgrade to tourist-class hotel if you rate comfort over authenticity, and prefer to dine out this evening instead?).

DAY 10 (11) Early morning car transfer to the station - you're heading out of Siberia tonight

DAY 11 (12) On board the Trans-Manchurian Express via Far Eastern

siberian journey comes to an end. For services in China and beyond please see pages 38-43.

* not included on the no-frills version of the trip

****ALL TRIPS ARE AVAILABLE IN REVERSE, PLEASE SEE OUR WEBSITE OR CONTACT US FOR DETAILS****
www.trans-siberian.co.uk



INCLUDED IN THE TRIP:

FULL ON TRIP

TRAIN: 2-Class 4-berth rail for complete journey.

MOSCOW: Car trf arrival/departure/ 2 nts 3* Hotel B&B, buddy guide 3 hours.

LAKE BAIKAL: Choosing to stay out of the City and up at the Lake gives you the option to choose from two all inclusive programmes.

VISAS REQUIRED FOR: RUSSIA & CHINA.

NO FRILLS TRIP

TRAIN: 2-Class 4-berth rail for complete journey.

MOSCOW: Car trf arrival/2 nts 1* Hotel room-only.

IRKUTSK: Car trf arrival/departure. 3 nights family stay accommodation. Bkfst & evening meal.

TRIP PRICE

	1 person	2 people	3-9 people
FULL ON	£999	£899	£799
NO FRILLS	£899.	£799	£699

SPICING IT UP

	1 person	2 people	3-9 people
FULL ON Extra Night Moscow	£55	£45	£45
NO FRILLS Extra Night Moscow	£35	£30	£30
Upgrading to 1st Class 2-berth Rail	£349	£349	£349
Upgrade to Hotel in Irkutsk	£40	£30	£30

THESE ARE THE DATES WHEN THIS ITINERARY WORKS

13-DAY ITINERARY

2005 Jan 09,23 Feb 13,27 Mar 13,27 Apr 03,17 May 01,15,29 Jun 05,19 Jul 03,17,31 Aug 07,21 Sep 11,25 Oct 09,23 Nov 13,27 Dec 11,25 **2006** Jan 15,29 Feb 05,19 Mar 05,19 Apr 09,23 May 07,21 Jun 11,25

14-DAY ITINERARY**

2005 Jan 15,29 Feb 05,19 Mar 05,19 Apr 09,23 May 07,21 Jun 11,25 Jul 09,23 Aug 13,27 Sep 03,17 Oct 01,15,29 Nov 05,19 Dec 03,17,31 **2006** Jan 07,21 Feb 11,25 Mar 11,25 Apr 15,29 May 13,27 Jun 03,17

**Supplement per person for the extra night is £45 for one, £30 for two or more

THE SUPER TRANS-SIB

open with care – overstuffed with action!

18 night/19 day trip 19 night/20 day trip

from
£1,090



YOUR ITINERARY RUNS LIKE THIS

DAY 01 Arrival in Moscow! We whisk you by car directly to your hotel - your first night in Moscow.

DAY 02 Moscow Calling! Your Moscow Buddy* is on hand to smooth your path... at least until lunchtime! Afternoon and evening – it's all in your hands!

DAY 03 A full free day take your pick of the best of Moscow! Mid-evening we take you* to your waiting train – to Siberia!

DAY 04 Full day on train through the Ural Mts, arrival late evening into Ekaterinburg – car to Hotel.

DAY 05 Walking Tour of Ekaterinburg with local guide. Afternoon and evening free to explore further.

DAY 06 Your choice of the following programs (one choice is included in your trip – no surcharges!)

YEAR-ROUND CHOICES

(check applicable season & difficulty-level for each)

(A) ROMANOV GRAVES (Europe/Asia Border Monument en-route). Car excursion to site where the Romanov bodies were hidden. 5-6 hours. All Year. No physical exertion involved.

(B) WALK IN THE TAIGA FOREST The unique forest ecosystem of the Steppes, with car to/from. 6 hour walk. 15 Jun - 15 Sep. Good fitness req'd.

(C) SIBERIAN WILDERNESS ADVENTURE Combined soft raft (6km) and Forest Hike (12km) - optional cave visit. 12 Jun-12 Sep. Good fitness req'd.

(D) SIBERIAN COUNTRYSIDE & HISTORIC VILLAGE Visit to an old village now under a Preservation Order. Includes home-cooked lunch, exhibitions of craftlore, horsecart riding. 8-9 hours. Year round. No physical exertion involved.

(E) URALS MOUNTAIN BIKE ADVENTURE All gear provided, for a 16km off-road course at Devil's Rock. Transport to/from included (40km). 15.May-30.Sep. Fitness and bike skills req'd.

SPECIAL WINTER ACTIVITIES

(check applicable season and difficulty-level for each)

(A) WINTER WALK to the Druzhba Caves. 16km distance, no climbing. 01.Dec-01.Mar. Good fitness req'd. take warm clothes and boots.

(B) SKIING At Ezhovaya Slopes Ski Resort - even Putin skis here (sometimes). Skis/Poles/Lift-Pass package purchasable locally approx \$25 payable in roubles. 01 Dec-15.Mar.

No instruction is included - this program is for those who can already ski without instruction.

(C) ICE-FISHING Yes, you saw the cartoons, now you can try it yourself. Tackle, Angler's Hints & Fur Coat provided. 15 Nov - 15 Dec & 01 Feb - 15 Mar. We don't guarantee you'll catch anything! Takes 8 hours but you can come back sooner if you get cold.

(D) SIBERIAN HUSKY DOG-SLEDDING Exactly what it says! A whole day adventure to include 3-4 hours sledding following a made track through the forest. 15 Nov - 01 Mar. (unavailable 31.Dec 10 Jan). No special fitness required, but be ready to fall-off in the soft snow a few times - they're pretty fast!

Option to either remain at your hotel until 02:00 (we hold your room on for late check-out) or check-out early-evening and chill-out at the Malachit Nightclub (admission tickets and bar-bill are yours, but we take you there and back) and then directly (with luggage) to station. Depart 04:00 eastwards...

DAY 07 & 08 Onwards via Novosibirsk and Krasnoyarsk... to Irkutsk

DAY 09 Arrival Irkutsk

No Frills: Car to family homestay for 3 nts in Irkutsk - Car trf to station on departure.

BAIKAL PROGRAMMES:

(Choose one of the 2 options below)

(1) SIBERIAN VILLAGE (Option One)

DAY 09 Arrival in Irkutsk and car (1hr) to Listvyanka Village (shore of Lake Baikal). Lunch, walking tour of the village including Lake Wildlife Museum. Get it all of your chest in a real Siberian Sauna (banya), which will give you an appetite for a home-cooked supper. Overnight with host family.

DAY 10 Choose one activity from the list, its all included in the trip price!

(A) TAKING A SHORT SOFT TREK with a local guide in the Baikal-side forests, (May-Oct)

(B) TAKE A FRESHWATER SCUBA DIVE in Lake Baikal (they say you gain a year of life if you dive in!) with highly-qualified CMAS-instructors (requires PADI-1), (May-Oct.) 2 dives included (Feb-Mar.) Ice Dive. 1 dive included.

“Ample overhead luggage bays keep even the largest rucksacks securely stowed during your journey, and combined with under-berth storage there is plenty of room for your gear - planning your day-pack saves heaving your big bags up and down too often.”

TOP TRANS-SIBERIAN TRAVEL TIPS NO 6



(C) TAKE YOURSELF FOR A WALK

out of the village with a packed lunch and a book, and contemplate the vastness of the world's hugest lake (year-round). Then get it all off your chest the Siberian way - in the banya! (sauna). You'll be ready for your home-cooked supper after all that - then sleep like a log in a log cabin.

IF YOU'VE CHOSEN THE 20-DAY VERSION OF THE ITINERARY, THIS IS YOUR EXTRA DAY!

(DAY 11) Day entirely free at Lake Baikal - breakfast and supper. Overnight with your host family.

IF YOU'VE CHOSEN THE 19-DAY VERSION OF THE ITINERARY, YOUR ITINERARY CONTINUES LIKE THIS:

DAY 11 (12) Transfer to Irkutsk. Free time to explore on foot (we watch your bags) until evening departure to station and on by overnight train to Ulan-Uday. OR

(2) FISHERMAN'S CAPE OF LAKE BAIKAL
(Option Two)

DAY 09 Car directly from Irkutsk Station to the remoter village of Bolshoe Goloustnoye (110km on rural roads). Your local guide shows you the village, the Old Church, and lake shoreline. Get the 20th Century out of your system in a real Russian banya (sauna) which will sharpen your appetite for home-cooked food for supper. Sleep soundly - the modern world is far, far away.

DAY 10 Leisurely lakeside walk (8km) to Ushkani Cape, and visit our friends the fishermen for lunch at their cabin. A gentle return walk (on the way see a dried-up Lake.) Sauna and supper in the hushed silence away from the tourist throng.

IF YOU'VE CHOSEN THE 20-DAY VERSION OF THE ITINERARY, THIS IS YOUR EXTRA DAY!

(DAY 11) Breakfast Walk back to Bolshoe Goloustnoye. Lunch. Sauna. Free time. Dinner. Overnight.

IF YOU'VE CHOSEN THE 19-DAY VERSION OF THE ITINERARY, YOUR ITINERARY CONTINUES LIKE THIS:

DAY 11 (12) Transfer to Irkutsk Free time to explore on foot (we watch your bags) until evening departure to station and on by overnight train to Ulan-Uday.

DAY 12 (13) Arrival early morning in Ulan-Uday, car to Family Stay. Car/guide trip to Atsagatsky Buddhist Lamasery. After the monastery, try

cuisine of Buryatia for lunch with a village family. Return to Ulan-Uday. Supper and overnight. (Option to upgrade to 3* hotel, at extra charge. (Meal basis B&B)

DAY 13 (14) Visit to the Ivolginsky Datsan (a much larger monastery). Lunch. Visit to Centre of Eastern Medicine (optional consultation). Supper and overnight.

DAY 14 (15) Early transfer to the station and depart for Mongolia - midnight border crossing (with halt for formalities).

DAY 15 (16) Mid-morning arrival in Outer Mongolia! Shower, breakfast, then by car* to a Mongolian Ger Camp - with accommodation in traditional Mongolian wood-framed felt tents (gers). The huge area of the Mongolian steppes around the camp is yours to explore. Lunch and Supper are included (yes, there are vegetarian options too). [No Frills: car transfer to 1* Hotel in Ulaanbaatar for a 3-night independent stay]

DAY 16 (17) Horse-riding is available (for a small local charge) with local herdsmen leaders - or walk, relax, or sometimes play traditional Mongolian sports? (FB incl).

DAY 17 (18) Back to Ulaanbaatar. Your local Mongolian Buddy will help you find the very best of "UB". Overnight at 3* hotel giving you time to sample Mongolian cuisine for supper

DAY 18 (19) Car transfer* to your departing Beijing-bound train this morning. Midnight border crossing and onwards into China!

DAY 19 (20) Thunder on across China past the Great Wall. Mid-afternoon arrival into Beijing Central Station. Your trans-siberian journey comes to an end. For services in China and beyond please see pages 38-43

****ALL TRIPS ARE AVAILABLE IN REVERSE, PLEASE SEE OUR WEBSITE OR CONTACT US FOR DETAILS****
www.trans-siberian.co.uk

*not included on the no-frills version of the trip

* if you are travelling on the same day as other passengers, we may substitute an air-conditioned minibus for this journey. This can happen - because there's only one train per week for the final leg into Beijing.

INCLUDED IN THE TRIP: FULL ON TRIP	NO FRILLS TRIP
TRAIN: 2-Class 4-berth rail for complete journey.	TRAIN: 2-Class 4-berth rail for complete journey.
MOSCOW: Car trf arrival/departure/ 2 nts 3* Hotel B&B, buddy guide 3 hours.	MOSCOW: Car trf arrival/2 nts 1* Hotel room-only.
EKATERINBURG: Car trf arrival/departure. 2 nts 3* Hotel B&B, *incl late check out. Walking tour, day trip.	EKATERINBURG: Car trf arrival/departure. 2 nts 1* Hotel room-only (shared bathroom). *incl late check out.
LAKE BAIKAL: Choosing to stay out of the City and up at the Lake gives you the option to choose from two all inclusive programmes.	IRKUTSK: Car trf arrival/departure. 3 nights family stay accommodation. Bkfst & evening meal.
ULAN-UDAY: Car trf arrival/departure. 2 nts family stay, full board. Including excursions as per itinerary.	ULAN-UDAY: Car trf arrival/departure. 2 nts family stay, full board.
ULAANBAATAR: All car trfs, 2 nts Mongolian Ger Camp accommodation (full board) 1 nt 3* hotel Ulaanbaatar, B&B. Optional Walking tour of Ulaanbaatar.	ULAANBAATAR: All car trfs, 3 nts 1* hotel Ulaanbaatar. B&B.
VISAS REQUIRED FOR: RUSSIA, MONGOLIA & CHINA	

TRIP PRICE

	1 person	2 people	3-9 people
FULL ON	£1570	£1470	£1370
NO FRILLS	£1290	£1190	£1090

SPICING IT UP

	1 person	2 people	3-9 people
FULL-ON extra nights Moscow	£55	£45	£45
NO FRILLS extra nights Moscow	£35	£30	£30
Upgrading to 1st Class 2-berth Rail	£449	£449	£449
Hotel upgrade Ulan-Uday	£50	£40	£40

THESE ARE THE DATES WHEN THIS ITINERARY WORKS

19-DAY ITINERARY
2005 Jan 03,17 Feb 07,21 Mar 07,21 Apr 11,25 May 09,23 Jun 13,27 Jul 11,25
 Aug 01,15,29* Sep 05,19 Oct03,17 Nov07,21 Dec05,19 **2006** Jan 09,23 Feb 13,27
 Mar 13,27 Apr 03,17 May 01,15,29 Jun 05,19

*£30.00 supplement applies on above date for our mini naadam festival see page 8 for full details
 2006 start dates 19 day trip

20-DAY ITINERARY**
2005 Jan 09,23 Feb 13,27 Mar 13,27 Apr 03,17 May 01,15,29 Jun 05,19 Jul 03,17
 Aug 07,21 Sep 11,25 Oct 09,23 Nov 13,27 Dec 11,25 **2006** Jan 01,15,29
 Feb 05,19 Mar 05,19 Apr 09,23 May 07,21 Jun 11,25

**Supplement per person for the extra night is £45 for one, £30 for two or more

OUTER & INNER MONGOLIA

see both sides of mongolia – only with russia experience

17 nights/18 days 21 nights/22 days operational season: may - sept

from
£1,249

MOSCOW
IRKUTSK
ULANBAATAR
HUHEHOT
BEIJING

YOUR ITINERARY DIRECTLY TO ULAANBAATAR RUNS LIKE THIS:

DAY 01 Arrival in Moscow! We whisk you by car directly to your hotel - your first night in Moscow.

DAY 02 Moscow Calling! Your Moscow Buddy is on hand to smooth your path... at least until lunchtime! Afternoon and evening - it's all in your hands!

DAY 03 A full free day take your pick of the best of Moscow! Mid-evening we take you to your waiting train - to Siberia!

DAY 04 - 06 On board the Trans-Mongolian Express... The train makes several unscheduled stops, allowing you only time to make a quick

purchase from the locals of home cooked produce or replenish your drinks cabinet.

DAY 07 On board the Trans-Mongolian express circumnavigating the shores of Lake Baikal.

DAY 08 Arrival in Ulaanbaatar Car to hotel. Guided walk of the old city centre. Evening free to explore Ulaanbaatar's nightlife. Overnight 3* Hotel.

DAY 09 Depart from Jeep trip into Bayan Gobi. Stay in Gers with herdsmen (NB. this is not a tourist camp - you are the guests of the nomads). Traditional supper, and overnight.

DAY 10 Jeep trip onwards to ancient Karakorum (modern Harhorin) - 8 hours off-road driving, picnic lunch en-route. Supper and overnight in gers with local herdsmen.

DAY 11 Sightseeing in the Gobi Picnic lunch. Return towards Ulaanbaatar, drive to Elstei Ger Camp. Supper and overnight in "tourist" gers

DAY 12 Free day at Elstei Ger Camp - for walking, horse-riding (arrange/pay locally) or relaxing. Supper and overnight.

DAY 13 Free day at Elstei Ger Camp - for walking, horse-riding (arrange/pay locally) or relaxing. Supper and overnight.

DAY 14 Return to Ulaanbaatar Overnight at centrally-located 3* Hotel.

DAY 15 Breakfast Time to explore the Ulaanbaatar. Car trf* to station, for evening departure to Huhehot. Overnight on board.

DAY 16 Late evening arrival into Huhehot, car transfer to your Hotel.

DAY 17 Breakfast Guided city tour of Huhehot, Capital of Inner Mongolia. Freetime overnight.

DAY 18 Breakfast Free time evening departure to Beijing.

DAY 19 Early morning arrival into Beijing. For services in China and beyond please see pages 38-43.

* if you are travelling on the same day as other passengers, we may substitute an air-conditioned minibus for this journey. This can happen - because there's only one train per week for the final leg into Beijing



“Inner Mongolia was more richly-endowed by the Chinese emperors than Outer Mongolia - yet most people steam straight through and never see the amazing temples and mosques in this fascinating and almost unvisited area.”

TOP TRANS-SIBERIAN TRAVEL TIPS NO 7

YOUR ITINERARY VIA IRKUTSK RUNS LIKE THIS:

DAY 01 Arrival in Moscow! We whisk you by car directly to your hotel - your first night in Moscow.

DAY 02 Moscow Calling! Your Moscow Buddy is on hand to smooth your path... at least until lunchtime! Afternoon and evening - it's all in your hands!

DAY 03 A full free day take your pick of the best of Moscow! Mid-evening we take you to your waiting train - to Siberia!

DAY 04 The Trans-Sib line leads you past Kazan and Ekaterinburg...

DAY 05 then onwards into Siberia itself, via Novosibirsk...

DAY 06 across the River Yenisei at Krasnoyarsk, Listvyanka is a lakeside village with one foot in the present...

SIBERIA FOR SOFTIES

DAY 07 Car directly from Station (1hr hour transfer) to Lake Baikal. Stay in an authentic Siberian log-cabin izba as part of the extended family. Lunch. See the village, the old Church, and the Lake Wildlife Museum - with your friendly local guide. Then get it all off your chest the Siberian way - in the banya! (sauna). You'll be ready for your home-cooked supper after all that - then sleep like a log in a log cabin.

DAY 08 Choose one activity from the list, it's all included in the trip price!

(A) SOFTIES TREK through the Taiga Forest - and a Forester Guide to explain the wildlife, ecosystem and lore of the Taiga.

(B) SIBERIAN SCUBA a freshwater dive in the world's Greatest Lake, with top CMAS-qualified instructors and pro-level gear (requires PADI-1). Includes two dives.

(C) OR DO YOUR OWN THING maybe take off on a Cliffside walk, mosey around the village, ride the local hydrofoil, or gain a year of life (so they say?) by taking a dip in Baikal. Enjoy a sauna after your exertions - Supper. and maybe try the local bar? Overnight with your host family.

DAY 09 Entirely free at Listvyanka (Breakfast & Supper included) overnight with your host family.

DAY 10 Car transfer to Irkutsk Free time to explore on foot (we watch your bags) until evening departure to station and on by overnight train to Ulanbaatar.

DAY 11 On board train to Mongolia midnight border crossing.

DAY 12 Arrival in Ulaanbaatar. Car to hotel. Guided walk of the old city centre, evening free to explore Ulaanbaatar's nightlife. Overnight 3* Hotel.

DAY 13 Leaving from Ulaanbaatar we take a jeep trip into Bayan Gobi. Stay in Gers with herdsman (NB. this is not a tourist camp - you are the guests of the nomads). Traditional supper, and overnight.

DAY 14 Jeep trip onwards to ancient Karakorum (modern Harhorin) - 8 hours off-road driving, picnic lunch en-route. Supper and overnight in gers with local herdsman.



DAY 15 Sightseeing in the Gobi Picnic lunch. Return towards Ulaanbaatar, drive to Elstei Ger Camp. Supper and overnight in "tourist" gers (there are wc and shower facilities at the camp - unlike with herdsman).

DAY 16 Free day at Elstei Ger Camp for walking, horse-riding (arrange/pay locally) or relaxing. Supper and overnight.

DAY 17 Free day at Ger Camp Supper and overnight.

DAY 18 Return to Ulaanbaatar Overnight at 3* hotel. Giving you an opportunity to sample some authentic Mongolian cuisine.

DAY 19 Breakfast. Last chance to explore the ancient capital city. Car trf to the station, for evening departure to Huhehot. Overnight on board.

DAY 20 Late evening arrival into Huhehot, car transfer to your Hotel.

DAY 21 Breakfast guided city tour of Huhehot, Capital of Inner Mongolia Freetime overnight.

DAY 22 Breakfast. Free time. Evening departure to Beijing. (n.b. 1st Cl/2-berth cabin is not available on this journey)

DAY 23 Early morning arrival into Beijing. For services in China and beyond please see pages 38 - 43.

* if you are travelling on the same day as other passengers, we may substitute an air-conditioned minibus for this journey. This can happen - because there's only one train per week for the final leg into Beijing.

INCLUDED IN THE TRIP:

TRAIN: 2-Class 4-berth rail for complete journey.

MOSCOW: Car trf arrival/departure/ 2 nts 3* Hotel B&B, buddy guide 3 hours.

LAKE BAIKAL: (Applies to trip via Irkutsk only.) Choosing to stay out of the City and up at the Lake gives you the option to choose from two all inclusive programmes. If camping Sleeping bags are provide

MONGOLIA: Optional walking tour of Ulaanbaatar. 1 night 3* Hotel Ulaanbaatar B&B. All transportation. 2 nights camping with Nomads. (full board) 3 nights tourist ger camp (full board) 1 night 3* Hotel Ulaanbaatar B&B. Sleeping bags are provided.

HUHEHOT: Car trf arrival departure. 1 nights 3* hotel B&B. Guided City tour.

VISAS REQUIRED FOR: RUSSIA, MONGOLIA & CHINA.

TRIP PRICE

	1 person	2 people	3-9 people
FULL ON HHA	£1649	£1349	£1249
FULL ON HHB	£1749	£1449	£1349

SPICING IT UP

	1 person	2 people	3-9 people
FULL ON Extra Night Moscow	£55	£45	£45
Upgrading to 1st Class 2-berth Rail HHA	£349	£349	£349
Upgrading to 1st Class 2-berth Rail HHB	£399	£395	£395

THESE ARE THE DATES WHEN THIS ITINERARY WORKS

19-DAY ITINERARY HHA

2005 May 02,09,16,23,30 Jun 06,13,20,27 Jul 04,11,18,25 Aug 01,08,15,22,29
Sep 05*,12,19,26 **2006** May 01,08,15,22,29 Jun 05,12,19,26

*£30.00 supplement applies on above date for Our Mini Naadam festival see page 8 for full details

23-DAY ITINERARY HHB

2005 May 05,19 Jun 09,23 Jul 07,21 Aug 11,25 Sep 15 **2006** May 11,25 Jun 15,29

“Then when Yesugei-Baator came, who had laid waste to the Tartars such as Temujin Ooge and Qori Buqa The Tartar; when Hoelun Ujin was with child, and was at the Deli-Oon Hill of Onan River; even then it was that Genghis-Khan was born. At the time he was born, he was holding in his right-hand a blood-clot the size of a knuckle-bone.”

The Birth of Genghis-Khan, from The Secret History of The Mongols



THREE CAPITALS

in a hurry? here are the highlights

11 nights/12 days

from
£699

MOSCOW
ULAANBAATAR
BEIJING



YOUR ITINERARY RUNS LIKE THIS

DAY 01 Arrival in Moscow! We whisk you by car directly to your hotel - your first night in Moscow.

DAY 02 Moscow Calling! Your Moscow Buddy* is on hand to smooth your path... at least until lunchtime! Afternoon and evening - it's all in your hands!

DAY 03 A full free day take your pick of the best of Moscow! Mid-evening we take you* to your waiting train - to Siberia!

DAY 04 - DAY 06 On board the Trans-Mongolian Express the train makes several unscheduled stops, allowing you only time to make a quick purchase from the locals of home cooked produce or replenish your drinks cabinet.

DAY 07 On board the Trans-Mongolian express circumnavigating the shores of Lake Baikal.

DAY 08 Early-morning arrival into Outer Mongolia! Shower, breakfast, then by car* to a Mongolian Ger Camp - with accommodation in traditional Mongolian wood-framed felt tents (gers). The huge area of the Mongolian steppes around the camp is yours to explore. Lunch and Supper are included (yes, there are vegetarian options too). [No Frills: car transfer to 1* Hotel in Ulaanbaatar for a 3-night independent stay, B&B].

DAY 09 Horse-riding is available (for

a small local charge) with local herdsmen leaders - or walk, relax, or sometimes play traditional Mongolian sports? (FB incl).

DAY 10 Back to Ulaanbaatar. Your local Mongolian Buddy will help you find the very best of "UB" - don't miss the Gandan Buddhist Lamasery. Then free to explore - find a net-café and croissants, or authentic Mongolian pot-stickers?

DAY 11 Car transfer* to your departing Beijing-bound train this morning.. Midnight border crossing.. and onwards into China!

DAY 12 Thunder on across China Early morning (subject to border delays) arrival into Beijing Central Station. Your trans-siberian journey comes to an end. For services in China and beyond please see pages 38-43.

****ALL TRIPS ARE AVAILABLE IN REVERSE, PLEASE SEE OUR WEBSITE OR CONTACT US FOR DETAILS****
www.trans-siberian.co.uk

*not included on the no-frills version of the trip

* if you are travelling on the same day as other passengers, we may substitute an air-conditioned minibus for this journey. This can happen - because there's only one train per week for the final leg into Beijing

INCLUDED IN THE TRIP:

FULL ON TRIP

TRAIN: 2-Class 4-berth rail for complete journey.

MOSCOW: Car trf arrival/departure/ 2 nts 3* Hotel B&B, buddy guide 3 hours.

ULAANBAATAR: All car trfs, 2 nts Mongolian Ger Camp accommodation (full board) 1 nt 3* hotel Ulaanbaatar, B&B. Optional Walking tour of Ulaanbaatar.

VISAS REQUIRED FOR: RUSSIA, MONGOLIA & CHINA.

NO FRILLS TRIP

TRAIN: 2-Class 4-berth rail for complete journey.

MOSCOW: Car trf arrival/2 nts 1* Hotel room-only.

ULAANBAATAR: All car trfs, 3 nts 1* hotel Ulaanbaatar. B&B.

TRIP PRICE

	1 person	2 people	3-9 people
FULL ON	£999	£899	£799
NO FRILLS	£899	£799	£699

SPICING IT UP

	1 person	2 people	3-9 people
FULL ON Extra Night Moscow	£55	£45	£45
NO FRILLS Extra Night Moscow	£35	£30	£30
Upgrading to 1st Class 2-berth Rail	£349	£349	£349

THESE ARE THE DATES WHEN THIS ITINERARY WORKS

12-DAY ITINERARY

2005 Jan 03,10,17,24,31 Feb 07,14,21,28 Mar 07,14,21,28 Apr 04,11,18,25

May 02,09,16,23,30 Jun 06,13,20,27 Jul 04,11,18,25 Aug 01,08,15,22,29

Sep 05*,12,19,26 Oct 03,10,17,24,31 Nov 07,14,21,28 Dec 05,12,19,26

2006 Jan 02,09,16,23,30 Feb 06,13,20,27 Mar 06,13,20,27 Apr 03,10,17,24

May 01,08,15,22 Jun 05,12,19,26

*£30.00 supplement applies on above date for Our Mini Naadam festival see page 8 for full details

THE TRANS-SIBERIAN CLASSIC

Europe to Asia non-stop!

9 nights/10 days

from
£509

MOSCOW
BEIJING



YOUR ITINERARY RUNS LIKE THIS

DAY 01 Arrival in Moscow! We whisk you by car directly to your hotel - your first night in Moscow.

DAY 02 Moscow Calling! Your Moscow Buddy* is on hand to smooth your path... at least until lunchtime! Afternoon and evening - it's all in your hands!

DAY 03 A full free day take your pick of the best of Moscow! Mid-evening we take you* to your waiting train - to Siberia!

DAY 04 - 06 On board the Trans-Manchurian Express The train makes several unscheduled stops, allowing you only time to make a quick

purchase from the locals of home cooked produce or replenish your drinks cabinet.

DAY 07 on board the Trans-Manchurian express circum-navigating the shores of Lake Baikal.

DAY 08 on board the Trans-Manchurian Express via far Eastern Siberia to the Chinese border.

DAY 09 on board through Manchuria. Sightings of the great wall, onwards to Beijing.

DAY 10 Thunder on across China Early morning arrival (subject to border delays) into Beijing Central Station. Your trans-siberian journey

comes to an end. For services in China and beyond please see pages 38-43.

*not included on the no-frills version of the trip.

****ALL TRIPS ARE AVAILABLE IN REVERSE, PLEASE SEE OUR WEBSITE OR CONTACT US FOR DETAILS****

www.trans-siberian.co.uk

INCLUDED IN THE TRIP: FULL ON TRIP

TRAIN: 2-Class 4-berth rail for complete journey.

MOSCOW: Car trf arrival/departure/ 2 nts 3* Hotel B&B, buddy guide 3 hours.

VISAS REQUIRED FOR: RUSSIA & CHINA.

NO FRILLS TRIP

TRAIN: 2-Class 4-berth rail for complete journey.

MOSCOW: Car trf arrival/2 nts 1* Hotel room-only.

TRIP PRICE

	1 person	2 people	3-9 people
FULL ON	£649	£619	£589
NO FRILLS	£569	£539	£509

SPICING IT UP

	1 person	2 people	3-9 people
FULL ON Extra Night Moscow	£55	£45	£45
NO FRILLS Extra Night Moscow	£35	£30	£30
Upgrading to 1st Class 2-berth Rail	£299	£299	£299

THESE ARE THE DATES WHEN THIS ITINERARY WORKS

10-DAY ITINERARY

2005 Jan 05,12,19,26 Feb 02,09,16,23 Mar 02,09,16,23,30 Apr 06,13,20,27
 May 04,11,18,25 Jun 01,08,15,22,29 Jul 06,13,20,27 Aug 03,10,17,24,31
 Sep 07,14,21,28 Oct 05,12,19,26 Nov 02,09,16,23,30 Dec 07,14,21,28 2006
2006 Jan 04,11,18,25 Feb 01,08,15,22 Mar 01,08,15,22,29 Apr 05,12,19,26
 May 03,10,17,24,31 Jun 07,14,21,28



ORIGINAL TRANS-SIBERIAN

end of the line

13 nights/14 days 9 nights/10 days

from
£609

MOSCOW
IRKUTSK
VLADIVOSTOK

YOUR ITINERARY RUNS LIKE THIS

VIA IRKUTSK

DAY 01 Arrival in Moscow! We whisk you by car directly to your hotel – your first night in Moscow.

DAY 02 Moscow Calling! Your Moscow Buddy is on hand to smooth your path... at least until lunchtime! Afternoon and evening – it's all in your hands!

DAY 03 A full free day, take your pick of the best of Moscow! Mid-evening we take you to your waiting train – to Siberia!

DAY 04 The Trans-Sib line, leads you past Kazan and Ekaterinburg...

DAY 05 then onwards into Siberia itself, via Novosibirsk...

DAY 06 across the River Yenisei at Krasnoyarsk...

SIBERIAN VILLAGE

DAY 07 Arrive Irkutsk Car directly from Station (1hr hour transfer) to Lake Baikal. Stay in an authentic Siberian log-cabin izba as part of the extended family. Lunch. See the village and the Lake Wildlife Museum – with your local guide. Then back for a sauna. You'll be ready for your home-cooked supper after all that – then sleep like a log in a log cabin.

DAY 08 Choose one activity from the list, its all included in the trip price!

(A) SOFTIES TREK through the Taiga Forest – and a Forester Guide to explain the wildlife, ecosystem and lore of the Taiga (May-Oct).

(B) SIBERIAN SCUBA a freshwater dive in the world's Greatest Lake, with top CMAS-qualified instructors and pro-level gear (requires PADI-1). (May-Oct). 2 dives included (Feb-Mar). Ice Diving. 1 dive included.

(C) OR DO YOUR OWN THING maybe take off on a Cliffside walk, mosey around the village, ride the local hydrofoil, or gain a year of life (so they say?) by taking a dip in Baikal. Sauna and Supper after your exertions – & maybe try the local bar? Overnight with host family.

DAY 09 Entirely free day at Lake Baikal Village. (Breakfast & Supper included) Overnight with host family.

DAY 10 Car to Irkutsk (1hr) and stay in a city apartment with a local family, in soviet-modern city style. Day free to explore the city, dinner with host family. (Or upgrade to tourist-class Hotel if you rate comfort over authenticity, and prefer to dine out this evening instead?).

DAY 11 Car transfer to station for early morning departure for Vladivostok.

DAY 12 -DAY 13 On board

DAY 14 Morning arrival into Vladivostok, your Trans-Siberian journey comes to an end. For Hotel options and onward journeys see price box.

****ALL TRIPS ARE AVAILABLE IN REVERSE, PLEASE SEE OUR WEBSITE OR CONTACT US FOR DETAILS****
www.trans-siberian.co.uk

DIRECT TO VLADIVOSTOK

DAY 01 - 03 As Irkutsk itinerary.
DAY 04 - 09 On board. The train makes several unscheduled stops allowing you time to make a quick purchases from the locals.

DAY 10 Arrival into Vladivostok. Your trans-siberian journey comes to an end. For hotel options and onward journeys see prices below.

INCLUDED IN THE TRIP:

TRAIN: 2-Class 4-berth rail for complete journey.

MOSCOW: Car trf arrival/departure/ 2 nts 3* Hotel B&B, buddy guide 3 hours.

LAKE BAIKAL: Choosing to stay out of the City and up at the Lake gives you the option to choose from two all inclusive programmes.

VISA REQUIRED FOR: RUSSIA.

TRIP PRICE

	1 person	2 people	3-9 people
FULL ON Original	£699	£639	£609
FULL ON Via Irkutsk	£999	£899	£799
Vladivostok to Harbin rail ticket only	£90	£90	£90
Vladivostok to Harbin rail & accommodation	£160	£140	£135

SPICING IT UP

	1 person	2 people	3-9 people
FULL ON Extra Night Moscow	£55	£45	£45
FULL ON Vladivostok (Car transfer on arrival)	£125	£65	£65
Upgrading to 1st Class 2-berth Rail	£399	£399	£399

2005/2006 START DATES

Departures on odd dates. Few rare exceptions – please confirm with us.

EAST WEST BIG TRANS-SIB

a great siberia & mongolia combo

15 nights/16 days 16nights/17 days

from
£820

BEIJING
ULANBAATAR
IRKUTSK
MOSCOW



YOUR ITINERARY RUNS LIKE THIS

All our itinerary models for Moscow – Beijing trips can be operated in reverse. Below is an example. Please note that train timetables run with some differences (days+times) going East-West. All of our reverse itineraries can be viewed on our website @ www.trans-siberian.co.uk.

DAY 01 Arrival in Beijing. Make your own way to hotel. Free time to explore one of the worlds fastest growing capital cities. Your train tickets will be delivered to your hotel after check in, with instructions to the station in English and Chinese.

DAY 02 Own transport to Beijing Central Station for early morning departure to Ulaanbaatar. Thunder on across China – past the Great Wall. Overnight on board.

DAY 03 Mid-afternoon arrival in Outer Mongolia! Shower, then by car* to a Mongolian Ger Camp - with accommodation in traditional Mongolian wood-framed felt tents (gers). The huge area of the Mongolian steppes around the camp is yours to explore. Supper is included (yes, there are vegetarian options too). **[No Frills:** car transfer to 1* Hotel in Ulaanbaatar for a 3-night independent stay].

DAY 04 Horse-riding is available (for a small local charge) with local

herdsmen leaders - or walk, relax, or sometimes play traditional Mongolian sports? (FB incl).

DAY 05 Back to Ulaanbaatar. Your local Mongolian Buddy will transfer you to your 3* hotel.

DAY 06 Breakfast. Time to stock up on provisions for your overnight journey. Car trf to the station for an evening departure to Irkutsk. Overnight on board (this is a local train and there is often not restaurant car).

DAY 07 On board...midnight border crossing into Russia.

DAY 08 - 10 No Frills: Car to B&B homestay for 3 nts in Irkutsk -Car trf to station on departure.

Full-On: Take your choice of program from the two options.

BAIKAL PROGRAMME

The half-way point - two different ways to enjoy your stay!

Listvyanka is a lakeside village with one foot in the present - Bolshoe



Goloustnoye is a more remote and timeless choice.

(1) SIBERIAN VILLAGE

(Option One)

DAY 8 Car directly from Station (1hr hour transfer) to Lake Baikal. Stay in an authentic Siberian log-cabin izba as part of the extended family. Lunch. See the village, the old Church, and the Lake Wildlife Museum - with your friendly local guide. Then get it all off your chest the Siberian way - in the banya! (sauna). You'll be ready for your home-cooked supper after all that - then sleep like a log in a log cabin.

DAY 09 Choose one activity from the list, its all included in the trip price!

(A) SNOWMOBILE TRIP (2 hrs) with a local guide - through the forest, or even out over the deep-frozen lake!(Dec-Apr only).

(B) SOFTIES TREK through the Taiga Forest - and a Forester Guide to explain the wildlife, ecosystem and lore of the Taiga (May-Oct).

(C) SIBERIAN SCUBA a freshwater dive in the world's Greatest Lake, with top CMAS-qualified instructors and pro-level gear (requires PADI-1). (May-Oct). 2 dives included (Feb-Mar). Ice Diving. 1 dive included.



(D) OR DO YOUR OWN THING

maybe take off on a Cliffside walk, mosey around the village, ride the local hydrofoil, or gain a year of life (so they say?) by taking a dip in Baikal. Sauna and Supper after your exertions & maybe try the local bar? Overnight with host family.

IF YOU'VE CHOSEN THE 17-DAY VERSION OF THE ITINERARY, THIS IS YOUR EXTRA DAY!

(DAY 10) Entirely free day at Listvyanka Village. (Breakfast & Supper included) Overnight with host family.

IF YOU'VE CHOSEN THE 16-DAY VERSION OF THE ITINERARY, YOUR ITINERARY CONTINUES LIKE THIS:

DAY 10 (11) Car to Irkutsk (1hr) and stay in a city apartment with a local family, in soviet-modern city style. Day free to explore the city, dinner with host family. (Or upgrade to tourist-

“Mongolia's one of the world's least-accessible countries, no western airlines fly there at all - why not take the time to explore further while you're here, as it's a long way to come back?”

TOP TRANS-SIBERIAN TRAVEL TIPS NO 8

class Hotel if you rate comfort over authenticity, and prefer to dine out this evening instead?).

DAY 11 (12) Breakfast. Free-time. Car transfer to the station for afternoon departure. Overnight on board.



(2) FISHERMAN'S CAPE OF LAKE BAIKAL

(Option Two)

DAY 08 Car directly from Station to the remoter village of Bolshoe Goloustnoye (110km on rural roads). Your local guide shows you the village, the Old Church, and lake shoreline. Get the 20th Century out of your system in a real Russian banya (sauna) which will sharpen your appetite for home-cooked food for supper. Sleep soundly - the modern world is far, far away.

DAY 09 Leisurely lakeside walk (8km) to Ushkani Cape, and visit our friends the fishermen for lunch at their cabin.

A gentle return walk (see a dried-up Lake on the way) for sauna and supper in the hushed silence away from the tourist throng.

IF YOU'VE CHOSEN THE 17-DAY VERSION OF THE ITINERARY, THIS IS YOUR EXTRA DAY!

(DAY 10) Breakfast Walk back to Bolshoe Goloustnoye. Lunch. Sauna. Free time. Dinner. Overnight.

IF YOU'VE CHOSEN THE 16-DAY VERSION OF THE ITINERARY, YOUR ITINERARY CONTINUES LIKE THIS:

DAY 10 (11) By car to Irkutsk (110km) and stay in a city apartment with a local family, in soviet-modern city style. Day free to explore the city, dinner with host family. (Or upgrade to tourist-class hotel if you rate comfort over authenticity, and prefer to dine out this evening instead?).

DAY 11 (12) Early car to the station to continue your journey on the Trans-Siberian Express.

DAY 12 (13) On board The Trans-Siberian train taking you across the River Yenisei, at Krasnoyarsk.

DAY 13 (14) on board The train makes several unscheduled stops, allowing you only time to make a



quick purchase from the locals of their home cooked produce or replenish your drinks cabinet.

DAY 14 (15) Afternoon arrival into Moscow! We whisk you by car directly to your Hotel - your first night in Moscow.

DAY 15 (16) Moscow Calling! Your Moscow Buddy* is on hand to smooth your path... at least until lunchtime!

Afternoon and evening - it's all in your hands!

DAY 16 (17) Breakfast Your Trans-Siberian adventure comes to an end. For services onwards to St. Petersburg please see page 15.

* not included on the no-frills version of the trip.

INCLUDED IN THE TRIP: FULL ON TRIP

TRAIN: 2-Class 4-berth rail for complete journey.
BEIJING: 1 night, room-only. 3* Hotel
ULAANBAATAR: All car trfs, 2 nts Mongolian Ger Camp accommodation (full board) 1 nt 3* hotel Ulaanbaatar, B&B. Optional Walking tour of Ulaanbaatar.
LAKE BAIKAL: Choosing to stay out of the City and up at the Lake gives you the option to choose from two all inclusive programmes.
MOSCOW: Car trf arrival/departure/ 2 nts 3* Hotel B&B, buddy guide 3 hours.

NO FRILLS TRIP

TRAIN: 2-Class 4-berth rail for complete journey.
BEIJING: 1 night, room-only. 1* Hotel
ULAANBAATAR: All car trfs, 3 nts 1* hotel Ulaanbaatar. B&B.
IRKUTSK: Car trf arrival/departure. 3 nights family stay accommodation. Bkfst & evening meal.
MOSCOW: Car trf arrival/2 nts 1* Hotel room-only.

VISAS REQUIRED FOR: RUSSIA, MONGOLIA & CHINA

TRIP PRICE

	1 person	2 people	3-9 people
FULL ON	£1190	£999	£960
NO FRILLS	£980	£840	£820

SPICING IT UP

	1 person	2 people	3-9 people
FULL ON Extra Night Moscow	£55	£45	£45
FULL ON Extra night Beijing	£60	£40	£35
NO FRILLS Extra Night Moscow	£35	£30	£30
NO FRILLS Extra night Beijing	£35	£25	£20
Upgrading to 1st Class 2-berth Rail	£399	£399	£399

THESE ARE THE DATES WHEN THIS ITINERARY WORKS

16-DAY ITINERARY

2005 Jan 14 Feb 04,18 Mar 04,18,25 Apr 08,22 May* Jun 06,20 Jul 04,18,25 Aug 08, 29 Sep 12,26 Oct 10,31

*Due to complex schedule changes, please contact us for valid start dates during May 2005

17-DAY ITINERARY**

2005 Jan 07,28 Feb 11,25 Mar 11 Apr 01,15,29 Jun 13,27 Jul 11 Aug 01,15,22 Sep 05,19 Oct 03,17,24 Nov 07,21 Dec 05,19,26

**Supplement per person for the extra night is £45 for one, £30 for two or more

SNOW TRAIN

ice-festival special itinerary – better hurry, melts soon!

11 nights/12 days 13 nights/14 days

from
£650

MOSCOW
EKATERINBURG
HARBIN
BEIJING



YOUR ITINERARY RUNS LIKE THIS

(VIA EKATERINBURG OR STRAIGHT THROUGH TO HARBIN)

DAY 01 Arrival in Moscow! We whisk you by car directly to your hotel - your first night in Moscow.

DAY 02 Moscow Calling! Your Moscow Buddy* is on hand to smooth your path... at least until lunchtime! Afternoon and evening – it's all in your hands!

DAY 03 A full free day, take your pick of the best of Moscow! Mid-evening we take you* to your waiting train. It's your choice! either take the direct route to Harbin, or chose to spend a few days in Ekaterinburg where you can pursue the ultimate in outdoor winter activities!

DAY 04 Full day on train through the Ural Mts, arrival late evening into

Ekaterinburg – car to Hotel.

DAY 05 Walking Tour of Ekaterinburg with local guide*. Afternoon and evening free to explore further.

DAY 06 Your choice of the following programs (one choice is included in your trip – no surcharges!) Option to either remain at your hotel until 02:00 (we hold your room on for late check-out) or check-out early-evening and chill-out at the Malachit Nightclub (admission tickets and bar-bill are yours, but we take you there and back) and then directly (with luggage) to station. Depart 04:00 eastwards...

SPECIAL WINTER ACTIVITIES

(check applicable difficulty-level for each)

(A) WINTER WALK to the Druzhba Caves. 16km distance, no climbing. 01.Dec-01.Mar. Good fitness req'd. take warm clothes and boots.

(B) SKIING At Ezhovaya Slopes Ski Resort – even Putin skis here (sometimes). Skis/Poles/Lift-Pass package purchasable locally approx \$25 payable in roubles. 01 Dec-15.Mar. No instruction is included – this program is for those who can already ski without instruction.

(C) ICE-FISHING Yes, you saw the cartoons, now you can try it yourself. Tackle, Angler's Hints & Fur Coat provided. 15 Nov - 15 Dec & 01 Feb -

15 Mar. We don't guarantee you'll catch anything! Takes 8 hours but you can come back sooner if you get cold.

(D) SIBERIAN HUSKY DOG-SLEDDING Exactly what it says! A whole day adventure to include 3-4 hours sledding following a made track through the forest. 15 Nov - 01 Mar. (unavailable 31.Dec 10 Jan). No special fitness required, but be ready to fall-off in the soft snow a few times – they're pretty fast!

(If you have chosen to take the Ekaterinburg stop, you will spend days 7 - 10 onboard.)



“Have you considered going in winter? Siberia gleams icy-white in the snow, the opera & ballet seasons are in full swing, and it’s the only time you can take a snow-mobile on Lake Baikal or visit the Harbin Ice & Lantern Festival.”

TOP TRANS-SIBERIAN TRAVEL TIPS NO 9

DAY 04 - 08 On board the Trans-Manchurian Express The train makes several unscheduled stops, allowing you only time to make a quick purchase from the locals of home cooked produce or replenish your drinks cabinet.

DAY 09 (DAY 11) After a night-time border crossing, you’ve entered China, and the area known as Manchuria – once a separate Chinese kingdom, and home to the Manchu (after whom the Manchu Dynasty, the last in Imperial China, was named). Arrival in Harbin, the regional capital. No transfer, as your hotel is in the large Town Square directly in front of the Rail Station. Balance of day free.

DAY 10 (DAY 12) Free day to visit the Ice Festival. There’s no specific program – we’ll give you directions for getting to the Festival-ground. The Festival is open from 10am-10pm daily and you must stay after dusk when the Chinese Lanterns are lit. Although

sculptors come from all over the world, this is very much a local festival, and you have a chance to let your hair down with the locals. If your stay includes the final day of the Festival you will get the opportunity to smash all the carvings with the locals in the traditional way!

DAY 11 (DAY 13) Free time to explore the Old Town of Harbin, with an attractive pedestrianised main street that features an incredible number of shops, cafes, bars and restaurants. Be sure to be ready for your evening departure to Beijing by sleeper train. (NB: 1st class/2-berth cabins are not available on this section.)

DAY 12 (DAY 14) Early morning arrival in Beijing, your Trans-Siberian Snow Train journey comes to an end. For services in China and beyond please see pages 38-43

† not included on the no-frills version of the trip.



INCLUDED IN THE TRIP:

FULL ON TRIP

TRAIN: 2-Class 4-berth rail for complete journey.
MOSCOW: Car trf arrival/departure/ 2 nts 3* Hotel B&B, buddy guide 3 hours.
EKATERINBURG: Car trf arrival/departure. 2 nts 3* Hotel B&B, *incl late check out. Walking tour, Free Winter Activity.
HARBIN: 2 nights. 4* Hotel room-only.

VISAS REQUIRED FOR: RUSSIA & CHINA

NO FRILLS TRIP

TRAIN: 2-Class 4-berth rail for complete journey.
MOSCOW: Car trf arrival/2 nts 1* Hotel room-only.
EKATERINBURG: Car trf arrival/departure. 2 nts 1* Hotel room-only (shared bathroom). *incl late check out.
HARBIN: 2 nights. Hotel room-only.

TRIP PRICE

	1 person	2 people	3-9 people
FULL ON	£900	£850	£750
FULL ON via Ekaterinburg	£1050	£1000	£900
NO FRILLS	£800	£750	£650
NO FRILLS via Ekaterinburg	£950	£900	£800

SPICING IT UP

	1 person	2 people	3-9 people
FULL ON Extra Night Moscow	£55	£45	£45
NO FRILLS Extra Night Moscow	£35	£30	£30
Upgrading to 1st Class 2-berth Rail*	£299	£299	£299
Upgrading to 1st Class 2-berth Rail via Ekaterinburg*	£325	£325	£325

*Please note 1st class 2-berth rail is not available on the Harbin to Beijing sector.

THESE ARE THE DATES WHEN THIS ITINERARY WORKS

THE SNOW TRAIN DIRECT TO HARBIN

2005 Dec 28 **2006** Jan 04,11,18,25 Feb 01,08,15

THE SNOW TRAIN VIA EKATERINBURG

2005 Dec 26 **2006** Jan 02,09,16,23 Feb 06,13

CHINA TRIPS

after the trans-sib – some options in china





China's enormous territories and legendarily numerous population are the heritage of a historical process that has unified many different peoples and empires – over thousands of years, into the State we know as modern China. The rich heritage of those Empires offers the visitor to China a multilayered diversity of cultural attractions. And this is not even to speak of the famed natural beauty-spots... Although China is now more open than ever to visit, the legacy of the previous “closed-door” policy is that even staggeringly important sights and destinations are poorly known as yet in the West. Here are just a few...



BEIJING

...is well-known as China's capital – but did you know that it began as a Mongolian stronghold, and its original name was neither Beijing nor Peking, but Khan-Baliq? When the Mongolian Khans overran China, they moved the capital up from centrally-located Xi'an, to be conveniently close to their Mongolian steppes. Later successors to the Empire were the Manchu. Fearful of their lives amidst locals they'd enslaved, they built a city-within-a-city that was Forbidden to all except Royal

courtiers and their elite bodyguard of eunuchs – the Forbidden City. It directly adjoins Tiananmen Square. You'll need 3-4 days to see everything in Beijing, even briefly – the great temples like the Lama Temple or the Temple of Heaven, the royal legacies at the Summer Palace, and a trip out to one of the several sections of the Great Wall that are open. But when are you going to find time to take a wander around the Hutongs – Beijing's back alleys that haven't changed in centuries? If the summer heat (+33C or more) leaves you parched, the good news is that Beijing doesn't have bars – it has whole streets of bars, where every doorway's a different drinking-hole. With your days jam-packed, its just as well there are night-markets for snack-food, great-value silk clothes, dodgy cd's and more...

XIAN

...was, for centuries, the Imperial Capital of China... a massive medieval walled city, with four gates facing out to the four compass-points of the Empire it controlled. At its heart, two great towers – announcing the start of the working day with a Bell in one, and its close with a massive Drum in the other. The pre-Mongolian royal dynasties who ruled here took refuge in Buddhism, and the great pagodas of the city survive to this day. Yet the Emperors permitted other faiths, and one of the most fascinating areas is the Old Muslim Quarter. It's thronging alleys are packed with cheap souvenirs, fake antiques, some great street-food for small-change prices – but at the epicentre of this cheerful chaos is the feng-shui



tranquility of the Chinese-style Mosque, with beautiful zen-influenced walled gardens. People unfairly forget all this... but they can almost be forgiven for centring their minds on the Exhibition of Terracotta Warriors, an hour's drive from town. Built to wage war for their Emperor in the after-life, they were vandalised only a decade after his death, in the power-vacuum that followed.

SHANGHAI

...is – questionably? – the largest city in the world, nearly three times larger than Beijing, and an economic powerhouse that is rapidly outstripping Hong Kong. Although there's a small “old town” area, the real attractions here are eating, drinking and shopping – Shanghai's a world-class city in all three activities! There are good onward sea connections to Japan.



GUILIN

...is mostly famous for its natural beauty, with scenery made up of limestone karsts eroded into strange formations. We arrange the accommodation in Guilin but leave you to arrange your days. Most visitors to Guilin take a boat trip on the River Li, which meanders between Guilin and Yangshuo. Yangshuo is a great day trip out. Nestled amongst the hills it offers caves to explore, bike hire and a relaxed atmosphere.



GUANGZHOU

...(once known as Canton) is a busy modern city. Famous for its Cantonese cuisine you can spend your brief stop in Guangzhou checking out the numerous restaurants, featuring some very exotic meats! If you have time between sittings check out the Huaisheng Mosque built during the Tang Dynasty, one of the oldest mosques in China.

PUBLIC TRANSPORT

China has State-subsidised public transport, making it a great transport hub to reach other places in Asia. One practicable route from Beijing is to Hanoi, which itself offers a new network of further onward routings through SE Asia.



SIMPLY BEIJING

hotel only

2 nights/3 days 2005

● BEIJING

ITINERARY

DAY 01 Arrive Beijing car transfer† from Beijing Central Station to your Hotel.

DAY 02 Free day in Beijing For day trip options please see page 43.

DAY 03 Morning check out of Hotel A chance to spend some time in Beijing at the end of your Trans-Siberian Itinerary before returning home or continuing on through China.



Full On: Car transfer from Beijing Central Station. 2 nights room-only 3* Hotel. Centrally located within walking distance to all main tourist sights. Ideal location short walking distance to bus station for airport departures. (Three blocks away).

*Please note for passengers arriving into Beijing International Airport a surcharge of £20.00 per person will apply.



No Frills: 2 nights room-only 1* hotel. Good location within walking distance to all main tourist sights. Clean but basic, run by non-English speaking staff. Ideal location short walking distance to bus station for airport departures.

† not included in the no-frills version of the trip.

START DATES any day.

TRIP PRICE

Simply Beijing	1 Person	2 People	3 - 9 People
FULL ON	£150	£85	£80
Additional night	£60	£40	£35
NO FRILLS	£85	£50	£45
Additional night	£35	£25	£20
Car transfer, hotel to Beijing airport	£45	£25	£25

VISA REQUIRED FOR: CHINA

BEIJING - HONG KONG

onwards ever onwards

3 nights/4 days 2005

● BEIJING ▶ ● HONG KONG

ITINERARY

DAY 01 Arrive Beijing car transfer† from Beijing Central Station to your Hotel.

DAY 02 Free day in Beijing For day trip options please see page 43.

DAY 03 Check out of Hotel Own taxi to station for lunch time departure to Hong Kong. Overnight on board.

DAY 04 Early afternoon arrival into Hong Kong.

Full On: Car transfer from Beijing Central Station. 2 nights room-only 3* Hotel. Centrally located within walking distance to all main tourist sights. No car transfer on departure. Soft class 4-berth Sleeper Beijing - Hong Kong.



*Please note for passengers arriving into Beijing International Airport, a surcharge of £20.00 per person will apply.

No Frills: 2 nights room-only 1* Hotel. Good location within walking distance to all main tourist sights. Clean but basic, run by non-English speaking staff. No car transfer on departure. Soft class 4-berth Sleeper Beijing - Hong Kong.

† not included in the no-frills version of the trip.

TRIP PRICE

Beijing - Hong Kong	1 Person	2 People	3 - 9 People
FULL ON	£310	£250	£240
Additional night	£60	£40	£35
NO FRILLS	£245	£205	£200
Additional night	£35	£25	£20

VISA REQUIRED FOR: CHINA



SCENIC CHINESE ROUTE

taking a few key stops on route to hong kong

10 nights/11 days 2005 start dates - any day

● BEIJING ▶ ● XIAN ▶ ● GUILIN ▶ ● GUANGZHOU ▶ ● HONG KONG

ITINERARY

DAY 01 Arrive Beijing car transfer† from Beijing Central Station to your Hotel.

DAY 02 Free day in Beijing For day trip options please see page 43.

DAY 03 Morning check out of Hotel. Own transfer for early evening departure to Xian.

DAY 04 Morning arrival Check into your Hotel. Free time to explore this historic city.

DAY 05 Full day excursion* to Terracotta Army (transport, lunch, tickets and guide included.)

DAY 06 Morning check out of Hotel. Own transfer for evening departure to Guilin.

DAY 07 Late evening arrival Own transfer. Check into your Hotel. Overnight.

DAY 08 Free time to explore, and maybe take a boat trip up the River Li.

DAY 09 Morning check out of Hotel. Own transfer for evening departure to Guangzhou.

DAY 10 Early morning arrival Own transfer. Check into your Hotel.

DAY 11 Morning check out of the Hotel. Afternoon departure by Hydrofoil to Hong Kong.

† not included in the no-frills version of the trip.

Full On: BEIJING: Car transfer from Beijing Central Station. 2 nights room-only 3* hotel. Centrally located within walking distance to all main tourist sights. Soft class sleeper throughout.

XIAN: 2 nights 3* hotel. Room-only. Full day CITS excursion to Terracotta Army.

GUILIN: 2 nights 3* hotel. Room-only. **GUANGZHOU:** 1 night 3* hotel. Room-only. Hydrofoil ticket to Hong Kong.

*Please note for passengers arriving into Beijing International Airport, a surcharge of £20.00 per person will apply.

No Frills: BEIJING: 2 nights room-only 1* hotel. Clean but basic.

XIAN: 2 nights 1* hotel. Room-only.

GUILIN: 2 nights 1* hotel. Room-only.

GUANGZHOU: 1 night 1* hotel. Room-only. Hydrofoil ticket to Hong Kong.

GREAT CHINESE ROUTE

less time? less stops!

7 nights/8 days 2005 start dates - any day

● BEIJING ▶ ● XIAN ▶ ● GUANGZHOU ▶ ● HONG KONG

ITINERARY

DAY 01 Arrive Beijing car transfer† from Beijing Central Station to your Hotel.

DAY 02 Free day in Beijing For day trip options please see page 43.

DAY 03 Morning check out of Hotel. Own transfer for early evening departure to Xian.

DAY 04 Morning arrival Check into your Hotel. Free time to explore this historic city.

DAY 05 Full day excursion* to Terracotta Army (transport, lunch, tickets and guide included.)

DAY 06 Early morning check out of Hotel. Own transfer to station for departure to Guangzhou.

DAY 07 Morning arrival Own transfer. Check into your Hotel.

DAY 08 Morning check out of the Hotel. Own transfer. For afternoon departure from Nanhhaigang Harbour to Hong Kong. Arrive Canton Road Harbour Tsimshatsui, Kowloon 19.00 hrs.

* not included in the no-frills version of the trip.

Full On: BEIJING: Car transfer from Beijing Central Station. 2 nights room-only 3* hotel. Centrally located within walking distance to all main tourist sights. Soft class sleeper throughout.

XIAN: 2 nights 3* hotel. Room-only. Full day CITS excursion to Terracotta Army.

GUANGZHOU: 1 night 3* hotel. Room -only. Hydrofoil ticket to Hong Kong.

* Please note for passengers arriving into Beijing International Airport, a surcharge of £20.00 per person will apply.

No Frills: BEIJING: 2 nights room-only 1* hotel. Good location within walking distance to all main tourist sights. Clean but basic, run by non-English speaking staff.

XIAN: 2 nights 1* hotel. Room-only.

GUANGZHOU: 1 night 1* hotel. Room-only. Hydrofoil ticket to Hong Kong.

TRIP PRICE

	1 Person	2 People	3 - 9 People
Simply Beijing			
FULL ON	£630	£530	£520
Additional night - Beijing	£60	£40	£35
Additional night - Xian	£60	£40	£35
NO FRILLS	£570	£470	£465
Additional night - Beijing	£35	£25	£20
Additional night - Xian	£35	£25	£23

Canton Fair Supplement: 14 - 30 April and 14 - 30 October in Guangzhou surcharge: £50pp/pn
VISA REQUIRED FOR: CHINA

TRIP PRICE

	1 Person	2 People	3 - 9 People
Great Chinese			
FULL ON	£540	£440	£430
Additional night - Beijing	£60	£40	£35
Additional night - Xian	£60	£40	£35
NO FRILLS	£445	£385	£375
Additional night - Beijing	£35	£25	£20
Additional night - Xian	£35	£25	£23

Canton Fair Supplement: 14 - 30 April and 14 - 30 October in Guangzhou surcharge: £50pp/pn
VISA REQUIRED FOR: CHINA



TERRACOTTA TRAIL

beijing to beijing with a side trip to historic xian

6 nights/7 days 2005

● BEIJING ▶ ● XIAN ▶ ● BEIJING

ITINERARY

DAY 01 Arrive Beijing car transfer[†] from Beijing Central Station to your Hotel.

DAY 02 Free day in Beijing For day trip options please see page 43.

DAY 03 Morning check out of Hotel. Own transfer for early evening departure to Xian.

DAY 04 Morning arrival Check into your hotel. Free time to explore this historic city.

DAY 05 Full day excursion* to Terracotta Army (transport, lunch, tickets and guide included).

DAY 06 Morning check out of Hotel. Own transfer for evening departure to Beijing.

DAY 07 Early morning arrival to Beijing. Additional night prices can be found below.

* not included in the no-frills version of the trip.

START DATES any day.

Full On: BEIJING: Car transfer from Beijing Central Station. 2 nights room-only 3* hotel. Centrally located within walking distance to all main tourist

sights. Soft class sleeper throughout.

XIAN: 2 nights 3* hotel. Room-only. Full day CITS excursion to Terracotta Army.

*Please note for passengers arriving into Beijing International Airport, a surcharge of £20.00 per person will apply.

No Frills: BEIJING: 2 nights room-only 1* hotel. Good location within walking distance to all main tourist sights. Clean but basic, run by non-English speaking staff.

XIAN: 2 nights 1* hotel. Room-only.



TERRACOTTA TRAIL

starting in beijing onwards to xian ending in shanghai

6 nights/7 days 2005

● BEIJING ▶ ● XIAN ▶ ● SHANGHAI

ITINERARY

DAY 01 Arrive Beijing car transfer[†] from Beijing Central Station to your Hotel.

DAY 02 Free day in Beijing For day trip options please see page 43.

DAY 03 Morning check out of Hotel. Own transfer for early evening departure to Xian.

DAY 04 Morning arrival Check into your Hotel. Free time to explore this historic city.

DAY 05 Full day excursion* to Terracotta Army (transport, lunch, tickets and guide included).

DAY 06 Morning check out of Hotel. Own transfer for evening departure to Shanghai.

DAY 07 Morning arrival to Shanghai. Hotel rates can be found below.

* not included in the no-frills version of the trip.

START DATES any day.

Full On: BEIJING: Car transfer from Beijing Central Station. 2 nights room-only 3* hotel. Centrally located within walking distance to all main tourist

sights. Soft class sleeper throughout.

XIAN: 2 nights 3* hotel. Room-only. Full day CITS excursion to Terracotta Army.

*Please note for passengers arriving into Beijing International Airport, a surcharge of £20.00 per person will apply.

No Frills: BEIJING: 2 nights room-only 1* hotel. Good location within walking distance to all main tourist sights. Clean but basic, run by non-English speaking staff.

XIAN: 2 nights 1* hotel. Room-only.



TRIP PRICE

Terracotta Trail returning to Beijing	1 Person	2 People	3 - 9 People
FULL ON	£390	£330	£320
Additional night - Beijing	£60	£40	£35
Additional night - Xian	£60	£40	£35
NO FRILLS	£335	£275	£265
Additional night - Beijing	£35	£25	£20
Additional night - Xian	£35	£25	£23

VISA REQUIRED FOR: CHINA

TRIP PRICE

Terracotta Trail returning to Beijing	1 Person	2 People	3 - 9 People
FULL ON	£390	£330	£320
Additional night - Beijing	£60	£40	£35
NO FRILLS	£335	£275	£265
Additional night - Beijing	£35	£25	£20
Peace Hotel Shanghai 5*	£135	£75	£70
Astor House Hotel 3*	£65	£45	£40

VISA REQUIRED FOR: CHINA



© Corbis

BEIJING - SHANGHAI

from the capital then on to the vibrant port of shanghai

6 nights/7 days 2005

● BEIJING ▶ ● SHANGHAI

ITINERARY

DAY 01 Arrive Beijing car transfer[†] from Beijing Central Station to your Hotel.

DAY 02 Free day in Beijing For day trip options please see below.

DAY 03 Check out of Hotel Free time. Own taxi to station for evening departure to Shanghai. Overnight on board.

DAY 04 Early morning arrival into Shanghai.

* not included in the no-frills version of the trip.

START DATES any day.

Two nights stay in the Chinese capital before you catch the overnight train to the vibrant Port Of Shanghai.

Full On: Car transfer from Beijing



Central Station. 2 nights room-only 3* hotel. Centrally located within walking distance to all main tourist sights. No car transfer on departure. Soft class 4-berth Sleeper Beijing - Shanghai.

*Please note for passengers arriving into Beijing International Airport, a surcharge of £20.00 per person will apply.

No Frills: 2 nights room-only 1* hotel. Good location within walking distance to all main tourist sights. Clean but basic, run by non-English speaking staff. No car transfer on departure. Soft class 4-berth Sleeper Beijing - Shanghai.



TRIP PRICE

Beijing-Shanghai	1 Person	2 People	3 - 9 People
FULL ON	£270	£210	£200
Additional night	£60	£40	£35
NO FRILLS	£215	£175	£165
Additional night	£35	£25	£20
Peace Hotel Shanghai 5*	£135	£75	£70
Huadong Hotel 3*	£65	£45	£40

VISA REQUIRED FOR: CHINA

BEIJING - HANOI

connecting down to south east asia

6 nights/7 days 2005

● BEIJING ▶ ● HANOI

ITINERARY

DAY 01 Arrive Beijing car transfer[†] from Beijing Central Station to your Hotel.

DAY 02 Free day in Beijing For day trip options please see below.

DAY 03 Check out of Hotel Free time. Own taxi to station for afternoon departure to Hanoi. Overnight on board.

DAY 04 On board

DAY 05 Arrive into Hanoi early morning.

* not included in the no-frills version of the trip.

START DATES Friday & Tuesday.

After your stay in Beijing you will take a two night soft class sleeper train down to Hanoi, in Northern Vietnam.

Full On: Car transfer from Beijing Central Station. 2 nights room-only 3* hotel. Centrally located within walking distance to all main tourist sights. No car transfer on departure. Soft class 4-berth Sleeper Beijing - Hanoi.

*Please note for passengers arriving into Beijing International Airport, a surcharge of £20.00 per person will apply.

No Frills: 2 nights room-only 1* hotel. Good location within walking distance to all main tourist sights. Clean but basic, run by non-English speaking staff. No car transfer on departure. Soft class 4-berth Sleeper Beijing - Hanoi.

TRIP PRICE

Beijing-Hanoi	1 person	2 people	3-9 people
FULL ON	£315	£245	£240
Additional night	£60	£40	£35
NO FRILLS	£240	£220	£215
Additional night	£35	£25	£20

VISA REQUIRED FOR: CHINA & VIETNAM

DAY TRIPS OPTIONS (GROUP TOURS OPERATED BY CITS, AVAILABLE ON ALL CHINESE TRIPS)

GREAT WALL INCLUDING THE MING TOMBS. ENGLISH SPEAKING GUIDES. FULL DAY TRIP, INCLUDES LUNCH	£45 per person
THE FORBIDDEN CITY INCLUDING THE TEMPLE OF HEAVEN AND THE SUMMER PALACE. ENGLISH SPEAKING GUIDES. FULL DAY TRIP, INCLUDES LUNCH	£55 per person
LI RIVER CRUISE TOUR INCLUDING LUNCH	£70 per person

COUNTDOWN TO YOUR TRIP



BEFORE YOU LEAVE

TRIP SELECTION

Our trips are not group trips, so the dates we list are not "group departures" - just the dates when all the travel sectors fall into alignment for snag-free connections through remote areas.



DOING THE "RED" TAPE

We know the booking form is dull stuff, but in destinations where they love red tape, it's important that your travel documents match your personal details to the letter. Once you've sent this to us, we'll send you the Visa Application forms you'll need for your trip. Most visas can only be obtained in the ninety days prior to your arrival - we'll let you know when. Do not apply for visas until you have booked your trip with us - without the supporting documents we provide for you, your application will usually be

rejected, resulting in wasted time and costs to you. We do all the visa-submission stuff - saving you the hassle of queuing for days at different Consulates. Because the Consulates only accept applications within the final 2-3 months, we'll be returning them to you 2- 3 weeks from this point. Along with your passport and visas, we'll be sending your travel documents too. Train tickets are only issued "in-destination", so they'll be awaiting your arrival. We'll need to know the confirmed arrival details, flight number, train number and station, or bus details, no later than a week prior so we can meet you.

VISA INFO FOR RUSSIA

Handy to know:

- (A) Russian visas are dated around the dates of your travel plans - the visa permits you to be in the country to complete your itinerary, but not for unscheduled extra activities. They give you a day's grace either side, but only for emergencies.
- (B) Arriving /leaving by surface? Russia's so big its Western borders are more than a day's ride from the main cities... so we'll need to fix your entry-dates accordingly. Please let us know if this applies to you!
- (C) When we submit your visa, we

need to show what travel services have been booked - any dates you list that aren't evidenced with travel docs to match will be knocked back. It'll also delay your application whilst they do it.

(D) Your passport must be valid for travel (i.e. not expired, or within six months after the end of all services) If you have two passports please consider which one you will travel on when applying for your visas.

VISA INFO FOR MONGOLIA & CHINA:

Mongolian visas largely follow the same pattern as the Russian - we'll help you with the administration to ensure you get your visa in good time. Chinese visas are quite simple - but there are numerous old Travellers' Tales about them! They are good for 30 days travel in China. You have 90 days to enter China from the day of issue,



when the clock starts ticking. You don't have to show any kind of proofs of accommodation or tour-packages to get the Chinese visa - even though the application would lead you to believe differently. Because the Chinese Visa is so much simpler than the other two, we leave this one to you - or if you want us to do it anyway, we'll charge you a Handling Fee of £30.00.

VISA FEES CHARGED

Nationality	Russia	Mongolia	China
GREAT BRITAIN	£45	£35	£30+Processing £30
AUSTRALIA/OTHER	£63	£35	£20+Processing £30
NEW ZEALAND	£45	£35	£20+Processing £30

* The Russian Consulate surcharges certain countries for visas - principally for countries that have raised their visa fees for Russians visiting in exchange. This list is constantly changing - please contact us for latest costs.

FREQUENTLY ASKED QUESTIONS

HOW MUCH SPENDING MONEY WILL I NEED?

This depends on what lifestyle you plan pursuing on your trip! The information pack we provide will give you an idea of current costs. Eating and drinking are very similar to most European cities, although Ulaanbaatar and Beijing have upscale versions if you have cash to flash! When itineraries take you far from the shops or cafes we often include meals. Russian souvenirs tend to be fun and low priced so you will be able to stash your pack full of Russian goodies!

FAMILY STAYS:

What should I expect? Some of our trips feature options staying with local families. Although sometimes this is for practical reasons (e.g. no other kind of accommodation is available - nomad stays in the Gobi for example) it also broadens the trip experience - two way interaction with the places and the people that live there. We're not promising luxury - we're promising a slice of life! People who live in harsh climates and terrains are naturally gregarious, and you will learn and experience more with them than you could ever absorb in a month staying in a sterile Western style Hotel.

DOWNSIDES:

There are no serious downsides or dangers in visiting our destinations, and there is no need for woman travellers to worry - in fact the men get the worry as Russia has an old take on a new annoyance - sexual harassment by aggressive ladies of the night. A firm *nyet* should get rid of them! Dressing-down is recommended for both sexes anyhow the lure of conspicuous wealth is the biggest draw for unwelcome attention. Also remember that it is law to have your documents on you at all times in Russia - spot-checks are routine. The cops know this and if you don't have them on you, will march you down to the Station to waste half a day of your trip and cost you a lot of roubles.

TRAVELLING WITH CHILDREN;

There are no serious downsides, and the infrastructure of travel and accommodation works well if you're taking children along. However, Communist-era thinking very much treated children as small adults, with little or no provisions or amenities. So priming your children is essential if they are not going to get bored. Take supplies of books and fresh comics

secreted in your suitcase - English reading material in unavailable for both children and adults alike. The journey is however the most fantastic introduction to a world they will have never known and they will meet many local children along the way, who will be very curious about their lives so take photos of home! Child prices are on application.



AREN'T VISAS A NIGHTMARE THAT TAKES WEEKS?

Needn't be! We do the whole thing for you. Russian visas need proof of booking from a Russian registered outfit - we do all of this behind the scenes. Get your booking form into us at least six weeks prior to departure, and you'll avoid express visa costs. If you do book less than six weeks prior to departure you still will be able to go, if the trip is available but you will need to pay express fees, please check with us how much these will be as they are dependant on what passport you hold and how much time we have. We'll also need the original of your passport to get your visas and this must be the same as the passport you gave us when you completed the original booking form.

WILL I MEET OTHER TRAVELLERS?

Very likely - especially in July & August. There is only one train a week for instance between Mongolia and Beijing (incredible, but true) so a bit of bunching is inevitable for the last section.

CAN I STAY EXTRA NIGHTS?

In Moscow and St Petersburg, yes! But the train schedules on some of the less than frequent routes make altering the stays almost impossible. Adding or removing odd days will almost never work. We always include two nights in Moscow prior to your Trans- Siberian journey and two in St Petersburg is the standard if you buy a St Petersburg add on - but "there is stacks to see, and I wish I had stayed longer!" is always the feedback we get!

DO I NEED INSURANCE? DO I NEED VACCINATIONS?

We do require you to have Travel insurance to take any of our trips. However we do not sell insurance so the policy purchase is your own choice. The Russian Consulate also requires you to have Travel Insurance to obtain a visa. No vaccinations are mandatory but you would be well advised to get informed advice on this (not every GP may be as well informed on the latest health developments in these locations). Particular concerns are Cholera, Typhoid, Hepatitis B, Tetanus and Diphtheria. Tick-borne encephalitis is a small risk on some Siberian trekking routes -there is a vaccine available. But the risk is VERY small and our leaders observe safety procedures. We also suggest you take a First Aid kit, to include a Sterile Surgical kit.

SPECIAL DIETS:

Meat features strongly in the national cuisine of most of our destinations. As a team the Russia Experience employs several vegetarians and we have never starved! But for when you are off the train you must advise us prior to departure if you have any special dietary requirements. If you have anything more complicated than a lacto-vegetarian diet consider that in some of the remote places you are to travel this could be a considerable problem - and stock up accordingly.

WHY IS IT EXPENSIVE TO MAKE EN-ROUTE STOPS?

A Trans-sib Secret that no guidebooks seemed to have grasped goes like this... non-stop international tickets are still priced accordingly to old bilateral agreements dating back to the Soviet era - which cannot be broken, even now! But if you introduce stops into the your trip these sectors are priced commercially by Russian Railways...so you only get the benefit of state subsidised fares for part of your journey

ARE THERE SHOWERS ON BOARD?

Most of the main long-distance (24 hrs+) on Russian Railways (but not on Mongolian or Chinese) now have a pay-to-use shower. You have to go to the "Special Services" wagon. One use is R50-90pp (prices are set by the varying train operators). No towel or soap is included in the price, we hope you have your own!

HOW SAFE IS IT TO BOOK WITH YOU??

The Russia Experience Ltd is a British registered company and a fully bonded Tour Operator, with a Bond from Trafalgar Insurance. This bonding meets and exceeds our responsibilities under the EEC 90/314/EC Directive On Package Tourism, which governs our operations. Your travel funds are secure when you book with us. Full details are available on request.



BOOKING CONDITIONS

- Your contract is with The Russia Experience Ltd. The Russia Experience Ltd is fully and independently insured for the complete financial protection of its clients under EEC legislation.
- All bookings are accepted on a request basis only. Acceptance of a Booking Form does not imply availability of a trip.
- No booking will be accepted without a completed Booking Form and either a Deposit or, according to the payment schedule applicable, full payment. Deposits are non refundable in all cases.
- The Trip Balance is due 60 days before commencement of your trip. Late payment may cause cancellation of all or part of your trip, with no refund payable.
- No travel documents will be issued until full payment has been made.
- We accept payment by cash, travellers' cheques and bankers' drafts and credit cards. We accept personal cheques subject to clearance, for which 10 days must be allowed.
- The responsibility for obtaining and carrying correct visas, passports and other travel documents remains with the passenger.
- If we have to cancel your trip for unexpected reasons, you will be offered a full refund of all funds paid over to us, or the offer of a trip of substantially equal or better quality if appropriate.
- If you wish to cancel your trip, we require written notice and will make funds to you in accordance with the table below, calculated from the date which we receive written notice.

PERIOD OF WRITTEN NOTICE	% OF TRIP PRICE * FORFEITED
Over 60 days before commencement	Deposit only
59-40 days before commencement	50%
39-14 days before commencement	90%
14 days or no show	100%

*The trip price does not include visas, visa processing fees, travel insurance or guidebooks, which shall be 100% forfeit in all cases.

- We are required by EU regulations to ensure you have travel insurance which covers repatriation if required. If you do not purchase our agents' travel insurance, you must confirm to our satisfaction that you have made alternative arrangements.
- We have made it clear in all sales materials that it is common and accepted practice for transport methods employed on our trips to run with delays, or to run below operational standards that would be regarded as normal in Western Europe. We cannot accept any claim for indirect or consequential loss arising from the failure of transport suppliers to conform either to timetables supplied by us or to their own timetables. We cannot accept any claim for shock, loss, distress, whether mental or financial, arising from deviations from operational standards by transport suppliers whose services form part of our itineraries (whether original or amended).
- We cannot be responsible for the safety of passengers or their belongings and for this reason we recommend strongly that you take out adequate travel insurance.
- If circumstances force us to amend your itinerary or the services with it, we shall notify you in writing as soon as possible. If the change arises during your trip, our representatives will make every effort to contact you personally. We reserve the right to substitute alternative transport or accommodation in the interests of the safety of our passengers and/or the successful completion of the itinerary.
- If you require us to change your booked itinerary, we will do everything possible to facilitate this, subject to your agreement to meet the costs which may be incurred. An estimate of these costs, in writing, will be provided before proceeding.
- We believe the descriptions of the services and facilities in this brochure are fair and accurate. In the event of faults or omissions by ourselves or those acting for us, appropriate compensation may be payable. Such cases will not include cases caused by war or threat of war; changes in transport timetables; denial of border entry for any undocumented reasons; riots; civil unrest; disasters of natural or nuclear origin; terrorist activities; declarations of autonomy or independence by areas not recognised as such by the United Nations, or decisions relating to foreign nationals made by the elected or de facto leaders of such areas; and such other circumstances beyond our reasonable control.
- In the event of illness, accident or cases described in Condition 15 above, we shall provide all reasonable help to passengers. Our assistance shall not

replace the assistance to be expected from travel insurance up to the limits of cover of the policy recommended by us, nor shall it replace the assistance of the Consul responsible for you whilst abroad.

- Claims for compensation will be accepted in writing only, within 30 days of final included service. We are unable to consider any claim where the assistance or advice of our local representatives has been unsought, rejected or ignored.
- Passengers who fail to join the trip by the means or at the time and date they previously advised us within at least 14 days' notice shall forfeit all subsequent services up to such time as they can be reasonably be rejoined. Any re-scheduling so caused shall be at the passenger's own expense. Departure without notification from the itinerary may result in forfeiture of subsequent services. "No-show" passengers shall forfeit all subsequent services if they fail to notify us of intention to rejoin their itinerary within 72 hours of their original arrival date. Expenses arising from unscheduled departure from the itinerary cannot be recovered from us.
- Tariffs shown in our leaflets were accurate based on prices and exchange at the time of printing. Should the prices of the services rise, or be adversely affected by exchange rate movements, we reserve the right to make a surcharge. If you have already commenced your booking by paying a deposit or full payment and completing a Booking Form, and the price increase should amount to a differential of more than 15% compared with that in the invoice issued to you (inclusive of visa handling, visa fees, travel insurance and airport taxes) you will be entitled to withdraw your booking and receive a full refund of all money paid over to us, with the exception of visa fees, which shall be forfeit in any event.
- With the exception of diving none of our activities require special training or above-average levels of fitness or mobility. If you are in any doubt about whether you should undertake them, you should consult your medical adviser. We are unable to refund any money in respect of services from which you withdraw after arrival. With reasonable notice, alternative versions of most of our activities can be organised for those of you who have special needs, and a section on our booking form invites information to enable us to plan for your needs in this case.
- At all times passengers are bound by local law and jurisdiction in their chosen destinations. Passengers who depart from the selected itinerary, either geographically or chronologically, are advised that they may be breaking local immigration regulations which at best will result in delay and inconvenience, and at worst may result in arrest and imprisonment, in neither of which cases are we able to assist in any material way. Passengers are advised that local duties and levies are frequently introduced, amended or increased without warning, and whilst we do our best to inform passengers of what local costs are likely to incur, we cannot guarantee that further costs may be imposed or increased subsequent to our recent information. Such costs remain the passenger's responsibility.
- We do not organise air travel to or from our destinations. Passengers are advised to ensure that agencies with whom they organise such services are properly bonded and certified to conduct such business. On request we can provide details with a recommended agent for many localities.



RUSSIA EXPERIENCE

2005/6 booking form - fax (020) 8566 8843

Passenger	Mr/Mrs/Ms	*First name	*Surname	*Date of birth	*Nationality	*Passport number	Special dietary Requirements**
1							
2							
3							
4							

* This information must conform with the details on your passport.

IN ALL CASES, WE ISSUE ONE SET OF DOCUMENTS TO THE LEAD PASSENGER. (PASSENGER 1)

Home address: Post code	Work Tel: Mobile Tel:	Home Tel: e-mail address:
--------------------------------	------------------------------	----------------------------------

ST.PETERSBURG

1st choice Hotel	2nd choice Hotel	Start date	No of additional nights	1st Class upgrade	Day trip	Arrival flight/train no	Arrival time	Arriving from
				✓				

TRANS-SIBERIAN

Trip Name	Start date	No of additional nights Moscow	1st Class upgrade	Arrival flight/train number	Arrival time	Arrival airport *Please delete as appropriate	Arriving from
			✓			Domodedovo/ Sheremetyevo	

Your day trip choice for Ekaterinburg (one only) Hotel upgrade Ulan-Uday ✓ Hotel upgrade Irkutsk City ✓	Your day trip choice for Moscow Siberia Option Name: Soft Trek/ Dive/Chill * delete as appropriate
---	--

CHINA

Start date	Number of additional nights Beijing	Number of additional nights Xian	Day trip option	Airport transfer

RUSSIAN CITIES

Hotel Name	Start date	Number of additional nights	Rail tickets Route	Day trip	Arrival flight/number	Arrival time	Arriving from *Please delete as appropriate
			2-berth/4-berth				Domodedovo/Sheremetyevo

Car transfers required _____ Buddy guide Services _____

VISAS

RUSSIA	MONGOLIA	CHINA
Free Visa handling service (15 working days to Process) Y/N	Please organise my Mongolian Visa (5 working days to process) Y/N	Please organise my Chinese Visa (5 working days to process) Y/N
I will organise my own Russian Visa with my local consulate Y/N	I will organise my own Mongolian visa with my local Consulate Y/N	I will organise my own Chinese visa with my local Consulate Y/N

INSURANCE

Do you wish to take out travel insurance with your agent	Y/N
If not you MUST provide details of alternative cover: Company _____ Policy number _____	

PAYMENT

I authorise the Russia Experience Ltd to charge my Visa/MasterCard/Switch/Maestro:

£250.00 per person deposit. I understand the balance is payable 60 days prior to departure.

If departure date is within 60 days. The full trip price, including visa fees.

CARD NUMBER

EXPIRY DATE ISSUE NUMBER

Card holder signature _____

Please automatically take full payment from my card 60 days prior to departure

Payment by cheque: Please make cheques payable to The Russia Experience Ltd.

TRAVEL AGENCY DETAILS (NOT APPLICABLE FOR DIRECT BOOKINGS) Agency Name: _____ ABTA number: _____ Consultant: _____ Telephone: _____ Email: _____	DELIVERY OF DOCUMENTS For all bookings made with one of our approved agents, please note all documentation (including passports) will be returned to the agency.
--	--

DECLARATION: I have read the Russia Experience brochure and would now like to book my trip, by signing the booking form or paying the deposit, I declare I have read the booking conditions and accept them on behalf of all members of my party listed above. I have also read and understood the following: That local conditions in my destination may differ from those in my country of residence in terms of infrastructure, attitude to foreign visitors, stability of local economy and restrictions on foreign exchange. I understand my visit is governed by regulations imposed by the elected Government, and that these regulations concerning availability of entry visas, registration of aliens, local taxes etc-are subject to revision without prior notice. I understand I must submit by passport for the purposes of obtaining visas for an uninterrupted period of 25 days. (Or pay an express fee for quicker processing)

Signed _____ Date _____

The Russia Experience

Research House, Fraser Rd, Perivale, Greenford, Middlesex UB6 7AQ, England
Tel (020) 8566 8846 Fax (020) 8566 8843 Email info@trans-siberian.co.uk

www.trans-siberian.co.uk
www.beetroot.org



AGENT